



**HEAD**®

**BIKES 2020**

# BICYCLES OUR PASSION



We strive to incorporate this fact as best as possible into the production and assembly of HEAD bicycles. We have been manufacturing bicycles for 25 years already, and this long-term experience has enabled us to turn dreams into reality when applying new technology and fulfilling the cycling public's demands.

The production Of HEAD bicycles is based on quality which is guaranteed by manual assembly of bicycles. This is very important for us because we always put quality first.

The route taken on a bicycle is never direct, and neither is it during bicycle production. At the beginning of the development of each bicycle, we focus thoroughly on the technology of new frames, alignment and design. This is followed by selection of the correct components and additions, and of course we always try to keep up with trends when choosing colors as well.

## Full suspension

- Adapt Edge III - 10
- Adapt Edge II - 11
- Adapt Edge I - 11

## MTB carbon

- Trenton V - 14
- Trenton IV - 15
- Trenton III - 15
- Trenton II - 16
- Trenton I - 16

## MTB alloy

- X-Rubi V - 20
- X-Rubi IV - 21
- X-Rubi III - 21
- X-Rubi II - 22
- X-Rubi I - 23
- Granger - 24
- Troy II - 26
- Troy I - 27

## MTB lady

- Adapt Edge Lady - 30
- Trenton Lady - 30
- X-Rubi Lady - 31
- Granger Lady - 31
- Tacoma II - 32
- Tacoma I - 33

## E-Bike Shimano

- Muret - 36
- Durango - 36
- Terni men - 37
- Terni lady - 37
- Lagos - 39
- Davis - 39
- Granby - 41
- Granby lady - 41
- E I-Peak E6100 - 42
- E Revelo E6100 - 42

## E-Bike Bafang

- Granby Bafang - 46
- Trivor - 47
- E City - 47
- E Revelo RM - 49
- E I-Peak RM - 49

## E-Bike Fazua

- E I-Speed II - 52
- E I-Speed I - 52
- E Picton II - 53
- E Picton I - 53

## Road

- I-Speed V - 56
- I-Speed IV - 57
- I-Speed III - 57
- I-Speed II - 58
- I-Speed I - 58

## Gravel

- I-Speed CrossPro - 62
- Picton II - 63
- Picton I - 63

## Cross

- X-Rubi Cross - 66
- I-Peak II - 67
- I-Peak I - 67

## Trekking

- Revelo II - 71
- Revelo I - 71

## City

- City 7G - 75

## Kid's

- Ridott III 26" - 78
- Ridott II 26" - 78
- Ridott I 26" - 79
- Ridott III 24" - 80
- Ridott II 24" - 80
- Ridott I 24" - 81
- Lauren II 24" - 82
- Lauren I 24" - 82
- Ridott II 20" - 84
- Ridott I 20" - 84
- Lauren I 20" - 85
- Junior 16" - 85

## Accessories

- Bike wear - 88-89
- Helmets - 90-91
- T-Shirts - 91
- Socks - 91
- Gloves - 92-93
- Bottles - 93

## Extra

- Geometry - 94-95
- HEAD Pro Team - 98



# TECHNOLOGIES



CARBON

Frames made with this technology are monolithic carbon fiber constructions with fibers placed alongside each other. The classic shape of the tubes, in conjunction with their large diameters, resulted in very low weight and high durability.



ALLOY 6061

Frames made of 6061 alloy are stiff and resistant to breakages while retaining the light mass typical for aluminum. All alloy frames are heat-treated after the welding, that also improves frames durability.



TRIPPLE BUTTED

DOUBLE BUTTED

Butting is the process, which decreases the frame weight, while the overall durability is on the same level or is even improved. Most of the HEAD alloy frames are double or triple-butted, type of butting depends on the frame model.



HYDROFORMED TUBE

Hydroforming is an industrial technique wherein special liquids are injected into the frame tubes using tremendous pressure. Hydroforming offers several advantages, such as complex shapes, improved bicycle frame aesthetics, and others.



TAPERED HEAD TUBE

The increased diameter of the head tube from 1 1/8" to 1.5" improves the overall stiffness of the connection between fork and frame. This leads to better precision of the bicycle control.



POSTMOUNT

Post-mount brake system eliminates additional adapters, which improves the stiffness of the connection between the frame and the brake caliper.



PRESS FIT

Bottom bracket bearings are placed inside individual cups. The cups are pressed into the frame to increase pedaling efficiency. This type of bottom bracket reduces bearing wear out and creates a better transfer of the driving force to the wheel.



DIRECT MOUNT

Direct mount of the front derailleur allows us to increase the stability of the connection between the derailleur and the frame.



INTERNAL CABLE ROUTING

Internal cable routing reduces wear of cables and shells. It protects them from mud, rain, and sand. It also improves the overall appearance of the bike design.

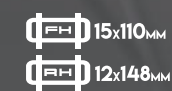


12x142<sub>MM</sub>

15x100<sub>MM</sub>

12x100<sub>MM</sub>

The thru-axle system stiffens the connectivity of the fork and the wheel, and rear wheel with the frame. In overall, the thru-axle system adds crucial stability and precision during the riding.



15x110<sub>MM</sub>

12x148<sub>MM</sub>

Boost standard hubs have wider distance between hub flanges - 148 mm on the rear hub and 110 mm on the front hub. That improves the spoke-bracing and increase the overall stiffness of the wheel.



500Wh

dualPWR - it means combining a classic bicycle with electric drive. We use two variants of motor placing - middle motor and rear hub motor. Drive unit can provide up to 80Nm of torque.

The 2020 collection brings a completely redesigned full suspension line.

The new Adapt Edge III and II have a new carbon frame with unique shape and 100mm of travel. The suspension system is very sensitive when you are going downhill, and it stiffens significantly when you are traveling uphill. If you lock your rear shock, you can go uphill and feel like you are riding on a hardtail. All models are ready to handle boost wheels, which will undoubtedly have a positive effect on the precision and stability during the riding.

Three different models - choose the best for you and try it out.



# Adapt Edge III

INTENDED USE  
ALL MOUNTAIN | TRAIL | CROSS COUNTRY | FUN

SHORT INFO  
frame: carbon monocoque TPR  
travel: 100/100mm  
drivetrain: 1x12 X01 Eagle  
sizes: 44/48/52cm  
color: black/grey  
weight: 11.3 kg

29"



**CARBON** **TAPERED HEAD TUBE** **12x148mm** **15x110mm** **INTERNAL CABLE ROUTING** **POSTMOUNT** **PRESS FIT**

- Rock Shox SID Select 100mm + Oneloc fullprint
- Rock Shox Deluxe RL - metric
- FSA Orbit C-40
- FSA Afterburner 740/318mm
- FSA Afterburner 70-90/318mm
- Sram X01 Eagle 1x12
- Sram X01 Eagle 12 speed
- Sram XG1275 10-50T Eagle
- Truvativ Descendant Carbon DUB 34T 175mm
- Shimano XT M8000 180/160mm
- RRX CB29 Carbon 28h
- HBC Pro 28h straight 15x110mm
- HBC Pro 28h straight 12x148mm
- Schwalbe Rocket Ron TL Evo 29x2.25"
- HEAD - VL1481 CrN-Ti
- Kind Shock Lev-Si 100mm travel- 350mm
- 125mm travel 400mm/316mm

CODE: 20001

# Adapt Edge II

INTENDED USE  
ALL MOUNTAIN | TRAIL | CROSS COUNTRY | FUN

SHORT INFO  
frame: carbon monocoque TPR  
travel: 100/100mm  
drivetrain: 1x12 GX Eagle  
sizes: 44/48/52cm  
color: black/green  
weight: 12.6 kg

29"



**CARBON** **TAPERED HEAD TUBE** **12x148mm** **15x110mm** **INTERNAL CABLE ROUTING** **POSTMOUNT** **PRESS FIT**

- Suntour Raidon32 Boost + Twin lever
- Suntour UNAIR RLR 165x38mm
- Neco H373M
- HBC Pro R-Film 720/35mm
- HBC Pro R-Film 70-90/35mm
- Sram GX Eagle 1x12
- Sram GX Eagle 12 speed
- Sram PG1230 11-50T Eagle
- Truvativ Descendant 6K DUB 34T 175mm
- Shimano MT401 180/160mm
- Remerx RXR Light 32h
- HBC Pro 32h 15x110mm
- HBC Pro 32h 12x148mm
- Schwalbe Rocket Ron TL Evo 29x2.25"
- HEAD - VL1481 CrN-Ti
- Kind Shock e20i 100mm travel- 375mm
- 125mm travel 430mm/316mm

CODE: 20002

# Adapt Edge I

INTENDED USE  
ALL MOUNTAIN | TRAIL | CROSS COUNTRY | FUN

SHORT INFO  
frame: carbon monocoque TPR  
travel: 100/100mm  
drivetrain: 1x12 NX Eagle  
sizes: 45/48/52cm  
color: black/grey  
weight: 12.3 kg

29"



**CARBON** **TAPERED HEAD TUBE** **12x148mm** **15x110mm** **INTERNAL CABLE ROUTING** **POSTMOUNT** **PRESS FIT**

- Suntour Raidon32 Boost + Twin lever
- Suntour UNAIR RLR 165x38mm
- Neco H373M
- HBC Pro R-Film 720/35mm
- HBC Pro R-Film 70-90/35mm
- Sram NX Eagle 1x12
- Sram NX Eagle 12 speed
- Sram PG1230 11-50T Eagle
- Sram NX DUB 32T 175mm
- Shimano MT401 180/160mm
- Remerx RXR Light 32h
- HBC Pro 32h 15x110mm
- HBC Pro 32h 12x148mm
- Schwalbe Rocket Ron TL Evo 29x2.25"
- HEAD - VL1481 CrN-Ti
- HBC Pro R-Film 400/316mm

CODE: 20003

# MTB CARBON



MTB line is one of the most important product lines in the HEAD Bike collection. We attach great importance to the quality, weight, and design of our bicycles.

All Trenton's are made of carbon, that allowed us to make it light and stiff. You can choose one of five different specifications, including the Shimano XTR 1x12 and Sram XX1 Eagle drivetrains. What is essential to notice that all bikes have boost standard wheels, 100mm of travel and air fork with lockout

Let's go through our carbon mountain bike adventure, choose your HEAD bike and go to ride it.

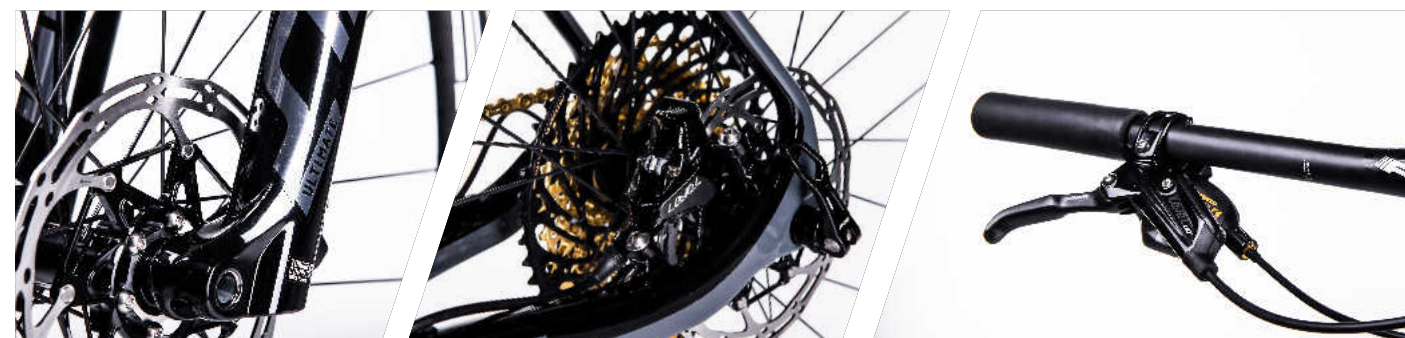
# Trenton V

INTENDED USE  
TRAIL | CROSS COUNTRY | MARATHON | FUN

## SHORT INFO

frame: carbon monocoque TPR  
travel: 100mm  
drivetrain: 1x12 XXI Eagle  
sizes: 43/48/53cm  
color: black/grey  
weight: 9.3 kg

29"



**CARBON** **TAPERED HEAD TUBE** **12x148mm** **15x110mm** **INTERNAL CABLE ROUTING** **POSTMOUNT**

- Rock Shox SID Ultimate Carbon 100mm + oneloc sprint
- FSA Orbit C-40
- FSA SL-K 740/318mm UD Carbon flat
- FSA SL-K 70-90/318mm
- Sram XXI Eagle 1x12
- Sram XXI Eagle 12 speed
- Sram XXI XGI299 10-50T Eagle
- Sram XXI DUB 34T 175mm
- Sram Level Ultimate 160/160mm
- RRX CB29 Carbon 28h
- HBC Pro 28h straight 15x110mm
- HBC Pro 28h straight 12x148mm
- Schwalbe Rocket Ron 29x2.25" TLE
- HEAD - VL1481 carbon
- FSA SL-K SBO 350-400/316mm carbon

CODE: 20100

# Trenton IV

INTENDED USE  
TRAIL | CROSS COUNTRY | MARATHON | FUN

## SHORT INFO

frame: carbon monocoque TPR  
travel: 100mm  
drivetrain: 1x12 XTR  
sizes: 43/48/53cm  
color: black/yellow  
weight: 9.4 kg

29"



**CARBON** **TAPERED HEAD TUBE** **12x148mm** **15x110mm** **INTERNAL CABLE ROUTING** **POSTMOUNT**

- Rock Shox SID Ultimate Carbon 100mm + oneloc sprint
- FSA Orbit C-40
- FSA SL-K 740/318mm UD Carbon flat
- FSA SL-K 70-90/318mm
- Shimano XTR SLM9100 1x12
- Shimano XTR RDM9100 12 speed
- Shimano XTR CSM9100 10-51T
- FSA SL-K Modular 34T 175mm carbon
- Shimano XTR M9100 160/160mm
- RRX CB29 Carbon 28h
- Shimano XTR MT900 28h 15x110mm straight
- Shimano XTR MT900 28h 12x148mm straight
- Schwalbe Rocket Ron 29x2.25" TLE
- HEAD - VL1481 carbon
- FSA SL-K SBO 350-400/316mm carbon

CODE: 20101

# Trenton III

INTENDED USE  
TRAIL | CROSS COUNTRY | MARATHON | FUN

## SHORT INFO

frame: carbon monocoque TPR  
travel: 100mm  
drivetrain: 1x12 X01 Eagle  
sizes: 43/48/53cm  
color: black/green  
weight: 10.4 kg

29"



**CARBON** **TAPERED HEAD TUBE** **12x148mm** **15x110mm** **INTERNAL CABLE ROUTING** **POSTMOUNT**

- Rock Shox Reba RL 100mm + oneloc sprint
- FSA Orbit C-40
- FSA V-Drive 740/318mm
- FSA V-Drive 70-90/318mm
- Sram X01 Eagle 1x12
- Sram X01 Eagle 12 speed
- Sram XGI275 10-50T Eagle
- Truvativ Descendant Carbon DUB 34T 175mm
- Shimano MT501 160/160mm
- DT Swiss Spline X1900 28h
- DT Swiss Spline X1900 28h 15x110mm
- DT Swiss Spline X1900 28h 12x148mm
- Schwalbe Rocket Ron 29x2.25" TLE
- HEAD - VL1481 Crn-Ti
- FSA V-Drive 350-400/316mm

CODE: 20102

# Trenton II

INTENDED USE  
TRAIL | CROSS COUNTRY | MARATHON | FUN

SHORT INFO  
frame: carbon monocoque TPR  
travel: 100mm  
drivetrain: 1x12 GX Eagle  
sizes: 43/48/53cm  
color: black/orange  
weight: 10.8 kg

29"



**CARBON** **TAPERED HEAD TUBE** **12x148mm** **15x110mm** **INTERNAL CABLE ROUTING** **POSTMOUNT**

Rock Shox Judy Gold RL 100mm + Poploc  
Neco H373M  
HBC Pro R-Film flat 720/35mm  
HBC Pro R-Film 70-90/35mm

Sram GX Eagle 1x12  
Sram GX Eagle 12 speed  
Sram PG1230 11-50T Eagle  
Truvativ Descendant 6K DUB 34T 175mm  
Shimano MT401 160/160mm

Remerx RXR Light 32h  
HBC Pro 32h 15x110mm  
HBC Pro 32h 12x148mm  
Schwalbe Rocket Ron 29x2.25" TLE  
HEAD - VL1481 Cr-Mo

HBC Pro R-Film 350-400/316mm

CODE: 20103

# Trenton I

INTENDED USE  
TRAIL | CROSS COUNTRY | MARATHON | FUN

SHORT INFO  
frame: carbon monocoque TPR  
travel: 100mm  
drivetrain: 1x12 NX Eagle  
sizes: 43/48/53cm  
color: black/blue  
weight: 11.9 kg

29"



**CARBON** **TAPERED HEAD TUBE** **12x148mm** **15x110mm** **INTERNAL CABLE ROUTING** **POSTMOUNT**

Rock Shox Judy Silver TK 100mm + Poploc  
Neco H373M  
HBC Pro R-Film flat 720/35mm  
HBC Pro R-Film 70-90/35mm

Sram SX Eagle 1x12  
Sram NX Eagle 12 speed  
Sram PG1210 11-50T Eagle  
Sram NX DUB 34T 175mm  
Shimano MT201 160/160mm

Remerx RXR 32h  
HBC Pro 32h 15x110mm  
HBC Pro 32h 12x148mm  
Schwalbe Rapid Rob 29x2.25"  
HEAD - VL1481 Cr-Mo

HBC Pro R-Film 350-400/316mm

CODE: 20104



# MTB ALLOY

The MTB ALLOY line consists of three different models:

X-Rubi  
Granger  
Troy

All X-Rubi frames are made of 6061 alloy. They are double or triple butted and heat-treated after the welding. These processes help us to make it light and strong. Our mountain bikes look aggressive due to hydroforming on our top models. New X-Rubi V is lighter than the previous model because now the frame is triple-buttet. It is also equipped with tapered fork and thru-axle wheels.

The Granger and Troy models have a fresh design and improved cable routing inside the frame.



# X-Rubi V

INTENDED USE  
TRAIL | CROSS COUNTRY | MARATHON | FUN

## SHORT INFO

frame: alloy 6061 TPR TB HT  
travel: 100mm  
drivetrain: 1x12 GX Eagle  
sizes: 44/48/52/56cm  
color: black matt/grey  
weight: 11.9 kg

29"



- AL ALLOY 6061
- 3S TRIPPLE BUTTED
- H.O. HYDROFORMED TUBE
- TAPERED HEAD TUBE
- 12x142mm
- 15x100mm
- IC INTERNAL CABLE ROUTING
- PM POSTMOUNT

- Suntour Axon RLR AIR 100mm + remote lock
- Neco H385E
- HBC Pro R-Film 720/35mm flat
- HBC Pro R-Film 70-100/35mm

- Sram GX Eagle 1x12
- Sram GX Eagle 12 speed
- Sram PG1230 11-50T Eagle
- Truvativ Descendant DUB 6K 34T 175mm
- Shimano MT501 180/160mm

- Remerx RXR Light 32h
- HBC Pro 32h 15x100mm
- HBC Pro 32h 12x142mm
- Schwalbe Rocket Ron 29x2.25" TLE
- HEAD - VL3381

- HBC Pro R-Film 350-400/316mm
- Wellgo M272T DU

CODE: 20105

# X-Rubi IV

INTENDED USE  
TRAIL | CROSS COUNTRY | MARATHON | FUN

## SHORT INFO

frame: alloy 6061 DB TPR HT  
travel: 100mm  
drivetrain: 1x12 NX Eagle  
sizes: 44/48/52/56cm  
color: black matt/green  
weight: 12.8 kg

29"



- AL ALLOY 6061
- 2S DOUBLE BUTTED
- H.O. HYDROFORMED TUBE
- TAPERED HEAD TUBE
- IC INTERNAL CABLE ROUTING
- PM POSTMOUNT

- Suntour Raidon XC RLR Air 100mm + remote lock
- Neco H385E
- HBC Pro R-Film 720/35mm flat
- HBC Pro R-Film 70-100/35mm

- Sram NX Eagle 1x12
- Sram NX Eagle 12 speed
- Sram PG1210 11-50T Eagle
- Sram NX DUB 34T 175mm
- Shimano MT401 180/160mm

- Remerx RXR Light 32h
- HBC Pro 32h QR9/100mm
- HBC Pro 32h QR9/135mm
- Schwalbe Rapid Rob 29x2.25"
- HEAD - VL3381

- HBC Pro R-Film 350-400/316mm
- Wellgo M272T DU

CODE: 20106



# X-Rubi III

INTENDED USE  
TRAIL | CROSS COUNTRY | MARATHON | FUN

## SHORT INFO

frame: alloy 6061 DB TPR HT  
travel: 100mm  
drivetrain: 1x12 SX Eagle  
sizes: 44/48/52/56cm  
color: black matt/red  
weight: 13.6 kg

29"



- AL ALLOY 6061
- 2S DOUBLE BUTTED
- H.O. HYDROFORMED TUBE
- TAPERED HEAD TUBE
- IC INTERNAL CABLE ROUTING
- PM POSTMOUNT

- Suntour XCR32 RLR Air 100mm + remote lock
- Neco H385E
- HBC Pro MTB 720/318 mm
- HBC Pro 70-100/318mm

- Sram SX Eagle 1x12
- Sram SX Eagle 12 speed
- Sram PG1210 11-50T Eagle
- Sram SX DUB 34T 175mm
- Shimano MT401 180/160mm

- Remerx RXR 32h
- HBC Pro 32h QR9/100mm
- HBC Pro 32h QR9/135mm
- Schwalbe Rapid Rob 29x2.25"
- HEAD - VL3381

- HBC Pro 350-400/316mm
- Wellgo M272T DU

CODE: 20107

# X-Rubi II

INTENDED USE  
TRAIL | CROSS COUNTRY | MARATHON | FUN

**SHORT INFO**  
frame: alloy 6061 DB HT  
travel: 100mm  
drivetrain: 2X10 Deore/Deore  
sizes: 44/48/52/56cm  
color: black matt/green  
yellow matt  
weight: 13.9 kg

29"



mtb | alloy

- AL** ALLOY 6061
- 2B** DOUBLE BUTTED
- HO** HYDROFORMED TUBE
- IC** INTERNAL CABLE ROUTING
- PM** POSTMOUNT

- ☞ Suntour XCR32 RLR Air + remote lock
- Neco H398
- ~ HBC Pro MTB 720/318mm
- ▬ HBC Pro 70-100/318mm
- ▮ Shimano Deore SLM6000 2x10
- ☉ Shimano Deore RDM6000 RD+ 10 speed
- ☞ Shimano Deore FDM6025
- ☉ Shimano HG50 11-36T
- ☉ Suntour XCM-D 36-22T 175mm
- ☉ Shimano MT200 180/160mm
- Remerx RXR 32h
- ☞ HBC 32h QR9/100mm
- ☞ HBC 32h QR9/135mm
- ▮ Schwalbe Smart Sam 29x2.1"
- ▮ HEAD - VL3381
- ☞ HBC Pro 350-400/316mm
- ▮ Wellgo M272T DU

CODE: 20108

# X-Rubi I

INTENDED USE  
TRAIL | CROSS COUNTRY | MARATHON | FUN

**SHORT INFO**  
frame: alloy 6061 DB HT  
travel: 100mm  
drivetrain: 3x9 Alivio/Acera  
sizes: 44/48/52/56cm  
color: black matt/yellow  
black matt/orange  
green matt  
weight: 14.2 kg

29"



- AL** ALLOY 6061
- 2B** DOUBLE BUTTED
- HO** HYDROFORMED TUBE
- IC** INTERNAL CABLE ROUTING
- PM** POSTMOUNT

- ☞ Suntour XCM RL 100mm+ remote lock
- Neco H398
- ~ HBC Pro MTB 720/318mm
- ▬ HBC Pro 70-100/318mm
- ▮ Shimano Alivio SLM2010 3x9
- ☉ Shimano Alivio RDM4000 9 speed
- ☞ Shimano Acera FDM3000
- ☉ Shimano HG200 11-34T
- ☉ Suntour XCM T410 40-30-22T 175mm
- ☉ Shimano MT200 180/160mm
- Remerx RXR 32h
- ☞ HBC 32h QR9/100mm
- ☞ HBC 32h QR9/135mm
- ▮ Schwalbe Smart Sam 29x2.1"
- ▮ HEAD - VL3381
- ☞ HBC Pro 350-400/316mm
- ▮ Wellgo M272T DU

CODE: 20109

# Granger

INTENDED USE  
TRAIL | FUN | RECREATIONAL | MARATHON

SHORT INFO  
frame: alloy 6061 DB HT  
travel: 100mm  
drivetrain: 3X9 Altus/Altus  
sizes: 42/47/52/56cm  
color: black matt/green  
black matt/red  
weight: 14.8 kg

29"



- ALLOY 6061
- DOUBLE BUTTED
- HYDROFORMED TUBE
- INTERNAL CABLE ROUTING
- POSTMOUNT

- Suntour XCT HLO 100mm
- Neco H148
- HBC MTB 720/318mm
- HBC 70-100/318mm
- Shimano Altus SLM2010 3x9
- Shimano Altus RDM370 9 speed
- Shimano Altus FDM2000
- Shimano HG200 11-34T
- Suntour XCM T410 40-30-22T 175mm
- Tektro HDM275 180/160mm
- Remerx Top Disc 32h
- HBC 32h QR9/100mm
- HBC 32h QR9/135mm
- Impac Smartpac 29x2.1"
- HEAD - VL1831
- HBC 350-400/316mm
- Wellgo C127 DU

CODE: 20110



mtb | alloy

mtb | alloy

# Troy II

INTENDED USE  
FUN | RECREATIONAL | MARATHON | TRAIL

## SHORT INFO

frame: alloy 6061 HT  
travel: 100mm  
drivetrain: 3x8 TX800/TY700  
sizes: 41/46/51cm  
color: black matt/orange  
black matt/yellow  
weight: 14.2 kg

27.5"



# Troy I

INTENDED USE  
TRAIL | CROSS COUNTRY | RECREATIONAL | FUN

## SHORT INFO

frame: alloy 6061 HT  
travel: 100mm  
drivetrain: 3x8 TX800/TY700  
sizes: 41/46/51cm  
color: black matt/blue  
orange matt  
weight: 14.3 kg

27.5"



AL ALLOY 6061 IC INTERNAL CABLE ROUTING PM POSTMOUNT

- Zoom HL CH-565D 100mm
- Neco HI48M
- HBC MTB 700/318mm
- HBC 70-90/318mm
- Shimano EF505 3x8

- Shimano RDTX800 8 speed
- Shimano FDTY700
- Shimano HG31 11-34T
- Suntour XCC T102 42-34-24T 175mm
- Shimano EF505 180/160mm

- Remerx Dragon 32h
- Formula DC20 32h QR9/100mm
- Formula DC22 32h QR9/135mm
- Impac Smartpac 27.2x2.1"
- HEAD - VL1831

- HBC 350/316mm
- Wellgo LU 895T DU

CODE: 20111

AL ALLOY 6061 IC INTERNAL CABLE ROUTING PM POSTMOUNT

- Zoom HL CH-565D 100mm
- Neco HI48M
- HBC MTB 700/318mm
- HBC 70-90/318mm
- Shimano TX800 3x8

- Shimano RDTX800 8 speed
- Shimano FDTY700
- Shimano HG31 11-34T
- Suntour XCC T102 42-34-24T 175mm
- Tektro MDM280 160/160mm

- Remerx Dragon 32h
- Formula DC20 32h QR9/100mm
- Formula DC22 32h QR9/135mm
- Impac Smartpac 27.2x2.1"
- HEAD - VL1831

- HBC 350/316mm
- Wellgo LU 895T DU

CODE: 20112



**JOY line is a special bicycle line orientated on ladies. Bicycles have to fit them properly.**

We have been focused on adjusting the geometry, length of the top tube, and standover to make Tacoma perfect for ladies. Design, the profile of the saddle, length of the stem are selected to meet the expectations of the most demanding users.

Choose your bike and have JOY of it.

# Adapt Edge lady

**INTENDED USE**  
ALL MOUNTAIN | TRAIL | CROSS COUNTRY | FUN

**SHORT INFO**  
frame: carbon monocoque TPR  
travel: 100/100mm  
drivetrain: 1x12 GX Eagle  
sizes: 44/48/52cm  
color: grey/pink  
weight: 12.5 kg

29"



**CARBON** **TAPERED HEAD TUBE** **12x148mm** **15x110mm** **INTERNAL CABLE ROUTING** **POSTMOUNT** **PRESS FIT**

- Suntour Raidon 32 RL Boost + Twin lever
- Suntour UNAIR RLR 165x38mm
- Neco H373M
- HBC Pro R-Film 720/35mm
- HBC Pro R-Film 70-90/35mm
- Sram NX Eagle 1x12
- Sram GX Eagle 12 speed
- Sram PG1230 11-50T Eagle
- Truvativ Descendant DUB 6K 34T 175mm
- Shimano MT401 180/160mm
- Remerx RXR Light 32h
- HBC Pro 32h 15x110mm
- HBC Pro 32h 12x148mm
- Schwalbe Rocket Ron Evo 29x2.25"
- HEAD - VL3381 Cr-Mo
- Kind Shock e20i 100mm travel - 375mm  
125mm travel 430mm/316mm

CODE: 20200

# X-Rubi lady

**INTENDED USE**  
TRAIL | CROSS COUNTRY | MARATHON | FUN

**SHORT INFO**  
frame: alloy 6061 DB HT  
travel: 100mm  
drivetrain: 2x10 Deore/Deore  
sizes: 29" - 44/48/52cm  
27.5" - 41/46/51cm  
color: mint matt  
weight: 13.9 kg

29" 27.5"



**ALLOY 6061** **DOUBLE BUTTED** **HYDROFORMED TUBE** **INTERNAL CABLE ROUTING** **POSTMOUNT**

- Suntour XCR32 RLR Air 100mm + remote lock
- Neco H398
- HBC Pro MTB 720/318mm
- HBC Pro 70-90/318mm
- Shimano Deore SLM6000 2x10
- Shimano Deore RDM6000 10 speed
- Shimano Deore FDM6025
- Shimano HG50 11-36T
- Suntour XCM-D 38-24/36-22T 175mm
- Shimano MT200 180/160mm
- Remerx RXR 32h
- HBC 32h QR9/100mm
- HBC 32h QR9/135mm
- Schwalbe Smart Sam 2.1"
- HEAD - VL4125
- HBC Pro 350-400/316mm
- Wellgo M272T DU

CODE: 27.5" - 20202  
29" - 20203

# Trenton lady

**INTENDED USE**  
TRAIL | CROSS COUNTRY | MARATHON | FUN

**SHORT INFO**  
frame: carbon monocoque TPR  
travel: 100mm  
drivetrain: 1x12 NX Eagle  
sizes: 43/48/53cm  
color: grey/pink  
weight: 11.9 kg

29"



**CARBON** **TAPERED HEAD TUBE** **12x148mm** **15x110mm** **INTERNAL CABLE ROUTING** **POSTMOUNT**

- Rock Shox Judy Silver TK 100mm + Poploc
- Neco H373M
- HBC Pro R-Film flat 720/35mm
- HBC Pro R-Film 70-90/35mm
- Sram SX Eagle 1x12
- Sram NX Eagle 12 speed
- Sram PG1210 11-50T Eagle
- Sram NX DUB 34T 175mm
- Shimano MT201 180/160mm
- Remerx RXR 32h
- HBC Pro 32h 15x110mm
- HBC Pro 32h 12x148mm
- Schwalbe Rapid Rob 29x2.25"
- HEAD - VL3381 Cr-Mo
- HBC Pro R-Film 350-400/316mm

CODE: 20201

# Granger lady

**INTENDED USE**  
TRAIL | FUN | RECREATIONAL | MARATHON

**SHORT INFO**  
frame: alloy 6061 DB HT  
travel: 100mm  
drivetrain: 3x9 Altus/Altus  
sizes: 42/47/52cm  
color: black matt/pink  
weight: 14.8 kg

29"



**ALLOY 6061** **DOUBLE BUTTED** **HYDROFORMED TUBE** **INTERNAL CABLE ROUTING** **POSTMOUNT**

- Suntour XCT HLO 100mm
- Neco H148
- HBC MTB 720/318mm
- HBC 70-90/318mm
- Shimano Altus SLM2010 3x9
- Shimano Altus RDM370 9 speed
- Shimano Altus FDM2000
- Shimano HG200 11-34T
- Suntour XCM T410 40-30-22T 175mm
- Tektro HDM275 180/160mm
- Remerx Top Disc 32h
- HBC 32h QR9/100mm
- HBC 32h QR9/135mm
- Impac Smartpac 29x2.1"
- HEAD - VL4125
- HBC 350-400/316mm
- Wellgo C127 DU

CODE: 20204

# Tacoma II

INTENDED USE  
FUN | RECREATIONAL | MARATHON | TRAIL

## SHORT INFO

frame: alloy 6061 HT  
travel: 100mm  
drivetrain: 3x9 Acera/Altus  
sizes: 39/44/48cm  
color: grey matt  
magenta matt  
weight: 13.8 kg

27.5"



# Tacoma I

INTENDED USE  
TRAIL | CROSS COUNTRY | RECREATIONAL | FUN

## SHORT INFO

frame: alloy 6061 HT  
travel: 100mm  
drivetrain: 3x8 TX800/TY700  
sizes: 39/44/48cm  
color: pink matt  
weight: 13.9 kg

27.5"



AL ALLOY 6061 IC INTERNAL CABLE ROUTING PM POSTMOUNT

Zoom HL CH-565 100mm  
Neco H148M  
HBC MTB 680/318mm  
HBC 70-100/318mm  
Shimano TX800 3x8

Shimano RDTX800 8 speed  
Shimano FDTY700  
Shimano HG31 11-32T  
Suntour XCC T102 42-34-24T 175mm  
Tektro C310

Remerx Dragon 36h  
Formula OV31 36h QR9/100mm  
Formula OV32 36h QR9/135mm  
Impac Smartpac 27.5x2.1"  
HEAD - VL4125

HBC 350/316mm  
Wellgo LU 895T DU

CODE: 20206



AL ALLOY 6061 IC INTERNAL CABLE ROUTING PM POSTMOUNT

Suntour XCT HLO 100mm  
Neco H148M  
HBC MTB 680/318mm  
HBC 70-100/318mm  
Shimano EF505 3x9

Shimano Acera RDM3000 9 speed  
Shimano Altus FDM370  
Shimano HG200 11-34T  
Suntour XCM T414 44-32-22T 175mm  
Shimano EF505 180/160mm

Remerx Top Disc 32h  
Formula DC20 32h QR9/100mm  
Formula DC22 32h QR9/135mm  
Schwalbe Smart Sam 27.5x2.1"  
HEAD - VL4125

HBC 350/316mm  
Wellgo M272T DU

CODE: 20205



**dualPWR means more possibilities, more goals to reach with no uphill and downhill limits. With our e-bikes, you can go wherever you want.**

The 2020 HEAD e-bike range consists of carbon full suspension bikes (Muret), long-travel FS alloy bikes (Durango, Terni), alloy hardtails (Lagos, Granby) and cross and trekking e-bike (e I Peak, E Revelo). In some models, we have decided to have a fully integrated battery for a clean and fresh design.

We believe that everyone will find the perfect e-bike for himself.

We are using three different models of Shimano STePS motors. Type of the motor depends on the category of bicycle use.

- STePS e8000 - for enduro and top mountain bike hardtails
- STePS e7000 - for mountain bike hardtails
- STePS e6100 - for mountain bikes, trekking and cross bicycles.

	E-8000	E-7000	E-6100
<b>Type of motor</b>	middle motor	middle motor	middle motor
<b>Power</b>	250W	250W	250W
<b>Assist modes</b>	boost trail eco walk	boost trail eco walk	boost trail eco walk
<b>Max torque</b>	70Nm	60Nm	60Nm
<b>Battery</b>	504Wh	504Wh	418Wh
<b>Range on full charge*</b>	boost - 70 km trail - 100 km eco - 145 km	boost - 70 km trail - 100 km eco - 145 km	boost - 60 km trail - 85 km eco - 125 km

\*Power-assist mode and capacity / travel distance (based on combined rider/bike weight of 100 kg, traveling on flat roads at 23 km/h)



# Muret

**INTENDED USE**  
ALL MOUNTAIN | TRAIL | CROSS COUNTRY | FUN

**SHORT INFO**  
frame: carbon TPR  
travel: 120/100mm  
drivetrain: 1x11 GX  
sizes: 41/46/51cm  
color: black/orange  
weight: 19.7 kg

27.5+  
SHIMANO  
STePS  
E8000



ALLOY 6061 TAPERED HEAD TUBE 12x148mm 15x110mm INTERNAL CABLE ROUTING POSTMOUNT 500Wh

**Motor**  
 Shimano STePS e8000 70Nm  
 Shimano STePS e8010 14Ah, 504Wh  
 Shimano STePS SCE8000  
 Rock Shox Revelation RC Air 120mm  
 Rock Shox Monarch RL 184x44  
 FSA Orbit-C  
 FSA V-Drive 740/318mm flat  
 FSA V-Drive 70-90/318mm  
 Sram GX-E 1x11  
 Sram GX 11 speed  
 Sram PG1150 10-42T  
 Shimano FCE8000 34T 175mm  
 Shimano MT501 180/180mm  
 Remerx WSR 538 32h  
 HBC Pro 32h 15x10mm  
 HBC Pro 32h 12x148mm  
 Schwalbe Nobby Nic 27.5x26" TLE  
 HEAD - VL1481 CrN-Ti  
 FSA V-Drive 400/316mm  
 Wellgo M272T DU  
**CODE: 20300**

# Terni men

**INTENDED USE**  
ENDURO | ALL MOUNTAIN | TRAIL | FUN

**SHORT INFO**  
frame: alloy 6061 TPR  
travel: 150/150mm  
drivetrain: 1x11 NX  
sizes: 44/47/51cm  
color: grey matt/green  
weight: 23.1 kg

27.5+  
SHIMANO  
STePS  
E7000



ALLOY 6061 TAPERED HEAD TUBE 12x148mm 15x110mm INTERNAL CABLE ROUTING POSTMOUNT 500Wh

**Motor**  
 Shimano STePS e7000 60Nm  
 Shimano STePS e8020 14Ah, 504Wh  
 Shimano STePS SCE7000  
 Suntour Aion 35 Air LoR 150mm  
 Suntour DUAir LoR 216x63mm  
 Neco H385E  
 HBC Pro R-Film 720/35mm  
 HBC Pro R-Film 70-90/35mm  
 Sram NX 1x11  
 Sram NX 11 speed  
 Sram PG1130 11-42T  
 Shimano FCE8000 34T 175mm  
 Shimano MT401 180/180mm  
 RRX J35S 32h  
 HBC Pro 32h 15x10mm  
 HBC Pro 32h 12x148mm  
 Schwalbe Nobby Nic 27.5x26" TLE  
 HEAD - VL3381  
 Kind Shock Eteri 385-440/309 travel 100-125mm  
 Wellgo M272T DU  
**CODE: 20302**

# Durango

**INTENDED USE**  
ENDURO | ALL MOUNTAIN | TRAIL | FUN

**SHORT INFO**  
frame: alloy 6061 TPR  
travel: 150/150mm  
drivetrain: 1x11 GX  
sizes: 44/47/51cm  
color: black matt/red  
weight: 22.9 kg

27.5+  
SHIMANO  
STePS  
E8000



ALLOY 6061 TAPERED HEAD TUBE 12x148mm 15x110mm INTERNAL CABLE ROUTING POSTMOUNT 500Wh

**Motor**  
 Shimano STePS e8000 70Nm  
 Shimano STePS e8020 14Ah, 504Wh  
 Shimano STePS SCE8000  
 Suntour Aion 35 Air LoR 150mm  
 Suntour DUAir LoR 216x63mm  
 Neco H385E  
 HBC Pro R-Film 720/35mm  
 HBC Pro R-Film 70-90/35mm  
 Sram NX 1x11  
 Sram GX 11 speed  
 Sram PG1130 11-42T  
 Shimano FCE8000 34T 175mm  
 Shimano MT501 180/180mm  
 Remerx WSR 538 32h  
 HBC Pro 32h 15x10mm  
 HBC Pro 32h 12x148mm  
 Schwalbe Nobby Nic 27.5x26" TLE  
 HEAD - VL3381  
 Kind Shock Eteri 385-440/309 travel 100-125mm  
 Wellgo M272T DU  
**CODE: 20301**

# Terni lady

**INTENDED USE**  
ENDURO | ALL MOUNTAIN | TRAIL | FUN

**SHORT INFO**  
frame: alloy 6061 TPR  
travel: 150/150mm  
drivetrain: 1x11 NX  
sizes: 44/47/51cm  
color: mint matt  
weight: 23.1 kg

27.5+  
SHIMANO  
STePS  
E7000



ALLOY 6061 TAPERED HEAD TUBE 12x148mm 15x110mm INTERNAL CABLE ROUTING POSTMOUNT 500Wh

**Motor**  
 Shimano STePS e7000 60Nm  
 Shimano STePS e8020 14Ah, 504Wh  
 Shimano STePS SCE7000  
 Suntour Aion 35 Air LoR 150mm  
 Suntour DUAir LoR 216x63mm  
 Neco H385E  
 HBC Pro R-Film 720/35mm  
 HBC Pro R-Film 70-90/35mm  
 Sram NX 1x11  
 Sram NX 11 speed  
 Sram PG1130 11-42T  
 Shimano FCE8000 34T 175mm  
 Shimano MT401 180/180mm  
 RRX J35S 32h  
 HBC Pro 32h 15x10mm  
 HBC Pro 32h 12x148mm  
 Schwalbe Nobby Nic 27.5x26" TLE  
 HEAD - VL3381  
 Kind Shock Eteri 385-440/309 travel 100-125mm  
 Wellgo M272T DU  
**CODE: 20303**



# Lagos

INTENDED USE  
ENDURO | ALL MOUNTAIN | TRAIL | FUN

**SHORT INFO**  
frame: alloy 6061 TPR  
travel: 130mm  
drivetrain: 1x11 NX  
sizes: 43/48/53cm  
color: yellow matt  
weight: 22.9 kg

27.5"  
SHIMANO  
STEPS  
E8000



AL ALLOY 6061 TAPERED HEAD TUBE 12x148mm 15x110mm IC INTERNAL CABLE ROUTING PM POSTMOUNT 500Wh

- |                                   |                                         |                             |                                   |                                                 |
|-----------------------------------|-----------------------------------------|-----------------------------|-----------------------------------|-------------------------------------------------|
| <b>Motor</b>                      | ~ Suntour Raidon 34 Air boost LoR 130mm | ⚙ Sram NX 1x11              | ○ RRX J35S 32h                    | ~ Kind Shock Eteri 385-440/309 travel 100-125mm |
| • Shimano STePS e8000 70Nm        | • Neco H385E                            | ⚙ Sram NX 11 speed          | -HBC Pro 32h 15x110mm             | • Wellgo M272T DU                               |
| ■ Shimano STePS e8020 14Ah, 504Wh | ~ HBC Pro R-Film 720/35mm               | ⚙ Sram PG130 11-42T         | -HBC Pro 32h 12x148mm             |                                                 |
| □ Shimano STePS SCE8000           | • HBC Pro R-Film 70-90/35mm             | ⚙ Shimano FCE8000 34T 175mm | ~ Schwalbe Nobby Nic 27.5x26" TLE | <b>CODE: 20304</b>                              |
|                                   |                                         | ⚙ Shimano MT401 180/180mm   | ~ HEAD - VL3381                   |                                                 |

# Davis

INTENDED USE  
ENDURO | ALL MOUNTAIN | TRAIL | FUN

**SHORT INFO**  
frame: alloy 6061 TPR  
travel: 100mm  
drivetrain: 1x10 Deore  
sizes: 46/50cm  
color: black matt/orange  
black matt/green  
black matt/yellow  
weight: 21.1 kg

27.5"  
SHIMANO  
STEPS  
E7000



AL ALLOY 6061 TAPERED HEAD TUBE 12x148mm 15x110mm IC INTERNAL CABLE ROUTING PM POSTMOUNT 500Wh

- |                                   |                                      |                                  |                           |                            |
|-----------------------------------|--------------------------------------|----------------------------------|---------------------------|----------------------------|
| <b>Motor</b>                      | ~ Suntour XCR 34 Air boost LoR 100mm | ⚙ Shimano Deore SLM6000 1x10     | ○ RRX J35S 32h            | ~ HBC Pro R-Film 400/316mm |
| • Shimano STePS e7000 60Nm        | • Neco H385E                         | ⚙ Shimano Deore RDM6000 10 speed | -HBC Pro 32h 15x110mm     | • Wellgo M272T DU          |
| ■ Shimano STePS e8010 14Ah, 504Wh | ~ HBC Pro R-Film 720/35mm            | ⚙ Shimano HG500 11-42T           | -HBC Pro 32h 12x148mm     |                            |
| □ Shimano STePS SCE7000           | • HBC Pro R-Film 70-80/35mm          | ⚙ Shimano FCE8000 34T 175mm      | ~ Kenda EL Capo 27.5x2.6" | <b>CODE: 20305</b>         |
|                                   |                                      | ⚙ Shimano MT200 180/180mm        | ~ HEAD - VL3381           |                            |

e-bike | shimano

e-bike | shimano



# Granby

INTENDED USE  
ENDURO | ALL MOUNTAIN | TRAIL | FUN

SHORT INFO  
frame: alloy 6061 TPR  
travel: 100mm  
drivetrain: 1x9 Alivio  
sizes: 46/51/55cm  
color: black matt/grey  
weight: 22.0 kg

27.5"

SHIMANO  
STePS  
E6100



AL ALLOY 6061 TAPERED HEAD TUBE 12x148mm 15x110mm INTERNAL CABLE ROUTING PM POSTMOUNT 418 Wh

**Motor**

- Shimano STePS e6100 60Nm
- Shimano STePS e8014 116Ah, 418Wh
- Shimano STePS SCE7000

- Suntour XCM34 boost LoR 100mm
- Neco H385E
- ~ HBC 720/318mm
- HBC 70-90/318mm

- Shimano Altus SLM2010 1x9
- Shimano Alivio RDM4000 9speed
- Shimano HG200 11-36T
- Shimano FCE6100 34T 175mm
- Tektro HDM275 180/160mm

- RRX J35S 32h
- HBC Pro 32h 15x110mm
- HBC Pro 32h 12x148mm
- Kenda EL Capo 27.5x2.6"
- HEAD - VL3381

- HBC 350-400/316mm
- Wellgo M272T DU

CODE: 20306

# Granby lady

INTENDED USE  
ENDURO | ALL MOUNTAIN | TRAIL | FUN

SHORT INFO  
frame: alloy 6061 TPR  
travel: 100mm  
drivetrain: 1x9 Alivio  
sizes: 46/51/55cm  
color: black matt/pink  
weight: 22.0 kg

29"

SHIMANO  
STePS  
E6100



AL ALLOY 6061 TAPERED HEAD TUBE 12x148mm 15x110mm INTERNAL CABLE ROUTING PM POSTMOUNT 418 Wh

**Motor**

- Shimano STePS e6100 60Nm
- Shimano STePS e8014 116Ah, 418Wh
- Shimano STePS SCE7000

- Suntour XCM34 boost LoR 100mm
- Neco H385E
- ~ HBC 720/318mm
- HBC 70-90/318mm

- Shimano Altus SLM2010 1x9
- Shimano Alivio RDM4000 9speed
- Shimano HG200 11-36T
- Shimano FCE6100 34T 175mm
- Tektro HDM275 180/160mm

- Remerx RXR 32h
- HBC Pro 32h 15x110mm
- HBC Pro 32h 12x148mm
- Schwabe Rapid Rob 29x2.25"
- HEAD - VL4125

- HBC 350-400/316mm
- Wellgo M272T DU

CODE: 20307

# eiPeak E6100

INTENDED USE  
TOURING | CROSS | URBAN

## SHORT INFO

frame: Alloy 6061 HT  
travel: 63mm  
drivetrain: 1x9 Alivio  
sizes: men - 50/55/59cm  
women - 46/50/54cm  
color: men - black matt/green  
women - grey matt/pink  
weight: 20.5 kg

28"

SHIMANO  
STePS  
E6100



AL ALLOY 6061 NO HYDROFORMED TUBE IC INTERNAL CABLE ROUTING 418 Wh

### Motor

Shimano STePS e6100 60Nm  
Shimano STePS e8014  
116Ah, 418Wh  
Shimano STePS SCE6100

Suntour Nex E25 HLO 63mm  
Neco H113  
HBC 660/318mm  
HBC 90-100/318mm  
Shimano Altus SLM2010 1x9

Shimano Alivio RDT4000 9 speed  
Shimano HG200 11-32T  
Shimano FCE6100 44T 175mm  
Shimano MT200 160/160mm  
Remerx Dragon 719 32h

Formula DC20 32h QR9/100mm  
Formula DC22 32h QR9/135mm  
Schwalbe Smart Sam 28x16"  
HEAD - VL3389/VL4333  
HBC 350/272mm

Wellgo C169T 2DU

CODE: MEN 20310  
WOMEN - 20311

# eRevelo E6100

INTENDED USE  
TOURING | CROSS | URBAN

## SHORT INFO

frame: Alloy 6061 HT  
travel: 63mm  
drivetrain: 1x9 Alivio  
sizes: men - 50/55/59cm  
women - 46/50/54cm  
color: black matt/grey  
weight: 22.6 kg

28"

SHIMANO  
STePS  
E6100



AL ALLOY 6061 NO HYDROFORMED TUBE IC INTERNAL CABLE ROUTING 418 Wh

### Motor

Shimano STePS e6100 60Nm  
Shimano STePS e8014  
116Ah, 418Wh  
Shimano STePS SCE6100

Suntour Nex E25 HLO 63mm  
Neco H113M  
HBC 660/318mm  
HBC 90-100/318mm  
Shimano Altus SLM2010 1x9

Shimano Alivio RDT4000 9 speed  
Shimano HG200 11-32T  
Shimano FCE6100 44T 175mm  
Shimano MT200 160/160mm  
Remerx Dragon 719 32h

Formula DC20 32h QR9/100mm  
Formula DC22 32h QR9/135mm  
Schwalbe Citizen 28x16"  
HEAD - VL4333/VL6309  
HBC 350/272mm

Wellgo C169T 2DU

Sport Pro6-48V  
Tivoli 6-48V

CODE: MEN 20308  
WOMEN - 20309



e-bike | shimano

e-bike | shimano

The Bafang units are fitted in well known Granby, Trivor, e City and in the models from RM series: I-Peak and E-Revelo.

The motor can be placed in one of two positions: in the middle or in the rear hub. Placement of motor depends on the bicycle category. The capacious battery is always mounted on the down tube for the perfect balance of the bike.

We are using these three Bafang motors:

- MM G030
- MM G360
- RM G020

	MM G330	MM G360	RM G020
<b>Type of motor</b>	middle motor	middle motor	rear hub motor
<b>Power</b>	250W	250W	250W
<b>Assist modes</b>	assist mode 1-5 walk	assist mode 1-5 walk	assist mode 1-5 walk
<b>Max torque</b>	80Nm	80Nm	45Nm
<b>Battery</b>	550Wh	550Wh	500Wh
<b>Range on full charge*</b>	110 km	80 km	80km

\*Power-assist mode and capacity / travel distance (based on combined rider/bike weight of 100 kg, traveling on flat roads at 23 km/h)



# Granby

INTENDED USE  
ALL MOUNTAIN | TRAIL | CROSS COUNTRY | FUN

SHORT INFO  
frame: Alloy 6061 HT  
travel: 100mm  
drivetrain: 1x8 Acera  
sizes: 46/51/55cm  
color: black matt/yellow  
weight: 22.4 kg

27.5"

BAFANG



AL ALLOY 6061 TAPERED HEAD TUBE 12x148mm 15x110mm IC INTERNAL CABLE ROUTING PM POSTMOUNT 550Wh

- |                                                                                       |                                                                                                          |                                                                                                                          |                                                                                                                 |                 |
|---------------------------------------------------------------------------------------|----------------------------------------------------------------------------------------------------------|--------------------------------------------------------------------------------------------------------------------------|-----------------------------------------------------------------------------------------------------------------|-----------------|
| <b>Motor</b><br>Bafang G330.250 80Nm<br>Greenway ZZ250<br>16Ah 550Wh<br>Bafang DP C07 | Suntour XCM LoR 100mm<br>Neco H385E<br>HBC MTB 720/318mm<br>HBC 80-100/318mm<br>Shimano Altus SLM315 1x8 | Shimano Acera RDM360 8 speed<br>Shimano HG31 11-34T<br>Bafang Boost 38T 170mm<br>Tektro HDM275 180/160mm<br>RRX J35S 32h | HBC Pro 32h QR9/100mm<br>HBC Pro 32h QR9/135mm<br>Kenda EL Capo 27.5x2.6"<br>HEAD - VL1831<br>HBC 350-400/316mm | Wellgo M272T DU |
|---------------------------------------------------------------------------------------|----------------------------------------------------------------------------------------------------------|--------------------------------------------------------------------------------------------------------------------------|-----------------------------------------------------------------------------------------------------------------|-----------------|

CODE: 20312

# Trivor

INTENDED USE  
TOURING | CROSS | URBAN

SHORT INFO  
frame: Alloy 6061 HT  
travel: 63mm  
drivetrain: 1x9 Acera  
sizes: men - 50/55/59cm  
women - 46/50/54cm  
color: men - black matt/grey  
women - grey matt/red  
weight: 23.6 kg

28"

BAFANG



AL ALLOY 6061 HO HYDROFORMED TUBE IC INTERNAL CABLE ROUTING 550Wh

- |                                                                                       |                                                                                                         |                                                                                                                               |                                                                                                                                   |                                                     |
|---------------------------------------------------------------------------------------|---------------------------------------------------------------------------------------------------------|-------------------------------------------------------------------------------------------------------------------------------|-----------------------------------------------------------------------------------------------------------------------------------|-----------------------------------------------------|
| <b>Motor</b><br>Bafang G360.250 80Nm<br>Greenway ZZ250<br>16Ah 550Wh<br>Bafang DP C10 | Suntour NEX E25 HLO 63mm<br>Neco H113<br>HBC 660/318mm<br>HBC 90-100/318mm<br>Shimano Altus SLM2010 1x9 | Shimano Acera RDT3000 9 speed<br>Shimano HG200 11-32T<br>Bafang 38T 170mm<br>Tektro HDM275 160/160mm<br>Remerx Dragon 719 32h | Formula DC20 32h QR9/100mm<br>Formula DC22 32h QR9/135mm<br>Schwalbe Citizen + RT 28x16"<br>HEAD - VL4333/V16309<br>HBC 350/272mm | Wellgo C169T 2DU<br>Axa BlueLine<br>Axa BlueLine 30 |
|---------------------------------------------------------------------------------------|---------------------------------------------------------------------------------------------------------|-------------------------------------------------------------------------------------------------------------------------------|-----------------------------------------------------------------------------------------------------------------------------------|-----------------------------------------------------|

CODE: MEN 20313  
WOMEN - 20314



# eCity

INTENDED USE  
TOURING | CROSS | URBAN

SHORT INFO  
frame: Alloy 6061 HT  
travel: 45mm  
drivetrain: Nexus 7G  
sizes: 28" - 46cm, 26" - 44cm  
color: black matt/orange  
grey matt/green  
weight: 22.6 kg

26" 28"

BAFANG



AL ALLOY 6061 HO HYDROFORMED TUBE IC INTERNAL CABLE ROUTING 500Wh

- |                                                                               |                                                                                     |                                                                                                                  |                                                                                                                             |                                             |
|-------------------------------------------------------------------------------|-------------------------------------------------------------------------------------|------------------------------------------------------------------------------------------------------------------|-----------------------------------------------------------------------------------------------------------------------------|---------------------------------------------|
| <b>Motor</b><br>Bafang G360.250 80Nm<br>Greenway ZZ98 14.5Ah<br>Bafang DP C10 | Zoom 141 45mm<br>Neco H113<br>HBC 660/318mm<br>HBC 90-100/318mm<br>Shimano Nexus 7G | Shimano Nexus 7 speed<br>Steel 22T<br>Prowheel Pro A38 170mm<br>Tektro HDM275 160/160mm<br>Remerx Dragon 719 36h | Formula CL51 QR9/100mm CL<br>Shimano SGC3001 36h 135mm CL<br>Schwalbe Citizen + RT 28x16"<br>HEAD - VL6310<br>HBC 350/272mm | Wellgo C169T 2DU<br>Axa Slim<br>Axa Echo 15 |
|-------------------------------------------------------------------------------|-------------------------------------------------------------------------------------|------------------------------------------------------------------------------------------------------------------|-----------------------------------------------------------------------------------------------------------------------------|---------------------------------------------|

CODE: 26" 20315  
28" - 20316

e-bike | bafang

e-bike | bafang



## eRevelo RM

INTENDED USE  
TOURING | CROSS | URBAN

SHORT INFO  
frame: Alloy 6061 HT  
travel: 63mm  
drivetrain: 3x8 Altus/TY710  
sizes: men - 50/55/59cm  
women - 46/50/54cm  
color: black matt/red  
weight: 22.4 kg

28"

BAFANG



AL ALLOY 6061 HO HYDROFORMED TUBE IC INTERNAL CABLE ROUTING 500W

### Motor

- ⚙ Bafang G020 45Nm
- 🔋 Greenway ZZ98 500Wh 14.5Ah
- 📦 Bafang DP C10

- 🔧 Suntour NEX E25 HLO 63mm
- 🔧 Neco H113
- 🔧 HBC 660/25.4mm
- 🔧 HBC 90-100/25.4mm
- 🔧 Shimano EF505 3x8

- 🔧 Shimano Altus RDM310 8 speed
- 🔧 Shimano FDTY710
- 🔧 Shimano HG31 11-32T
- 🔧 Prowheel TY-CM02 48-38-28 175mm
- 🔧 Shimano EF505 160/160mm

- 🔧 Remerx Dragon 719 36h
- 🔧 Formula DC20H 36h QR9/100mm
- 🔧 Rear Motor RM 020 36h
- 🔧 Schwalbe Citizen + RT 28x16"
- 🔧 HEAD - VL4333/ML6309

- 🔧 HBC 350/272mm
- 🔧 Wellgo C169T 2DU
- 🔧 Axa Slim
- 🔧 Uniled

CODE: MEN 20317  
WOMEN - 20318

## ePeak RM

INTENDED USE  
TOURING | CROSS | URBAN

SHORT INFO  
frame: Alloy 6061 HT  
travel: 63mm  
drivetrain: 3x8 Altus/TY710  
sizes: men - 50/55/59cm  
women - 46/50/54cm  
color: men - black matt/blue  
women - grey matt/lime  
weight: 22.2 kg

28"

BAFANG



AL ALLOY 6061 HO HYDROFORMED TUBE IC INTERNAL CABLE ROUTING 500W

### Motor

- ⚙ Bafang G020 45Nm
- 🔋 Greenway ZZ98 500Wh 14.5Ah
- 📦 Bafang DP C10

- 🔧 Suntour NEX E25 HLO 63mm
- 🔧 Neco H113
- 🔧 HBC 660/25.4mm
- 🔧 HBC 90-100/25.4mm
- 🔧 Shimano EF505 3x8

- 🔧 Shimano Altus RDM310 8 speed
- 🔧 Shimano FDTY710
- 🔧 Shimano HG31 11-32T
- 🔧 Prowheel TY-CM02 48-38-28 175mm
- 🔧 Shimano EF505 160/160mm

- 🔧 Remerx Dragon 719 36h
- 🔧 Formula DC20H 36h QR9/100mm
- 🔧 Rear Motor RM 020 36h
- 🔧 Schwalbe Citizen + RT 28x16"
- 🔧 HEAD - VL4333/ML3389

- 🔧 HBC 350/272mm
- 🔧 Wellgo C169T 2DU

CODE: MEN 20319  
WOMEN - 20320



**The Fazua is a very compact and light drive system.**

Firstly designed for road bikes, but this e-bike system, was successfully adapted into gravel bikes.

The **Fazua Evation** system:

- Bottom bracket - 13 kg with a maximum power transmission up to 60Nm,
- Drivepack - 19 kg with assist up to 25km/h and 250W,
- Battery - 14kg with 250Wh capacity and up to 50km range\*,
- Remote

The whole drive system weights only 46 kg what makes it very light and unique.

\*Power-assist mode and capacity / travel distance (based on combined rider/bike weight of 100 kg, traveling on flat roads at 23 km/h)

# eSpeed II

INTENDED USE  
RACE | FITNESS | ENDURANCE | GRAVEL

## SHORT INFO

frame: carbon  
fork: carbon  
drivetrain: 2x11 105  
sizes: 55/58/61  
color: green matt  
weight: 14.4 kg

28"

FAZUA



CARBON TAPERED HEAD TUBE 12x142mm 12x100mm INTERNAL CABLE ROUTING DM DIRECT MOUNT 250Wh

**Motor**  
 • Fazua 60Nm  
 ■ Battery Drivepack 36V 250Wh  
 □ Fazua display

• Carbon HH12  
 ■ FSA Orbit C-40  
 ~ FSA Gossamer Compact 440/318mm  
 ■ FSA Gossamer 90-110/318mm  
 ▮ Shimano 105 STR7020 2x11

• Shimano 105 RDR7000 11 speed  
 ~ Shimano 105 FDR7000  
 • Shimano 105 CSR7000 11-32T  
 • FSA CK746 IS 50-34T 175mm  
 • Shimano 105 BRR7070 160/160mm

○ Weinmann Impulse 24h  
 - HBC Pro 24h 12/100mm  
 - HBC Pro 24h 12/142mm  
 ▮ Schwalbe e-One 700x23C  
 ▮ HEAD VL1799 Cr-Mo

▮ FSA Gossamer SB20 350/272mm

**CODE: 20321**

# ePicton II

INTENDED USE  
RACE | FITNESS | ENDURANCE | GRAVEL

## SHORT INFO

frame: carbon TPR  
fork: carbon  
drivetrain: 1x11 Apex 1  
sizes: 55/58/61cm  
color: black matt/green  
weight: 14.5 kg

28"

FAZUA



CARBON TAPERED HEAD TUBE 12x142mm 12x100mm INTERNAL CABLE ROUTING DM DIRECT MOUNT 250Wh

**Motor**  
 • Fazua 60Nm  
 ■ Battery Drivepack 36V 250Wh  
 □ Fazua display

• Carbon HH12  
 ■ FSA Orbit C-40  
 ~ FSA NS Adventure compact 440/318mm  
 ■ FSA NS 90-110/318mm  
 ▮ Sram Apex 1 1x11

• Sram Apex 1 11 speed  
 ~ Sram PG1130 11-42T  
 • FSA CK746 IS 50-34T 175mm  
 • Sram Apex 1 160/160mm

○ Weinmann Impulse 24h  
 - HBC Pro 24h straight 12/100mm  
 - HBC Pro 24h straight 12/142mm  
 ▮ Schwalbe G-One 622-40C  
 ▮ HEAD VL1782 CrN-Ti

▮ FSA Energy SB20 350/272mm

**CODE: 20323**

# eSpeed I

INTENDED USE  
RACE | FITNESS | ENDURANCE | GRAVEL

## SHORT INFO

frame: alloy 6061 HT TPR  
fork: alloy  
drivetrain: 2x10 Tiagra  
sizes: 55/58/61  
color: black matt/green  
weight: 15.9 kg

28"

FAZUA



ALLOY 6061 TAPERED HEAD TUBE 12x142mm 12x100mm INTERNAL CABLE ROUTING DM DIRECT MOUNT 250Wh

**Motor**  
 • Fazua 60Nm  
 ■ Battery Drivepack 36V 250Wh  
 □ Fazua display

• Alu HH12  
 ■ Neco H385E  
 ~ HBC Pro Road 440/318mm  
 ■ HBC Pro 90-110/318mm  
 ▮ Shimano Tiagra STR4720 2x10

• Shimano Tiagra RDR4700 10 speed  
 ~ Shimano Tiagra FDR4700  
 • Shimano HG500 11-32T  
 • FSA CK746 IS 50-34T 175mm  
 • Shimano 105 BRR4770 160/160mm

○ Weinmann Impulse 32h  
 - HBC Pro 32h 12/100mm  
 - HBC Pro 32h 12/142mm  
 ▮ Schwalbe One 700x23C  
 ▮ HEAD VL1799 Cr-Mo

▮ HBC Pro 400/316mm

**CODE: 20322**

# ePicton I

INTENDED USE  
RACE | FITNESS | ENDURANCE | GRAVEL

## SHORT INFO

frame: Alloy 6061 HT TPR  
fork: alloy  
drivetrain: 2x10 Tiagra  
sizes: 55/58/61cm  
color: khaki  
weight: 16.2 kg

28"

FAZUA



ALLOY 6061 TAPERED HEAD TUBE 12x142mm 12x100mm INTERNAL CABLE ROUTING DM DIRECT MOUNT 250Wh

**Motor**  
 • Fazua 60Nm  
 ■ Battery Drivepack 36V 250Wh  
 □ Fazua display


• Alloy HH12  
 ■ Neco H385E  
 ~ HBC 440/318mm  
 ■ HBC 90-110/318mm  
 ▮ Shimano Tiagra ST4720 2x10

• Shimano Tiagra RDR4700 10 speed  
 ~ Shimano Tiagra FDR4700  
 • Shimano HG500 11-32T  
 • FSA CK746 IS 50-34T 175mm  
 • Shimano 105 BR4770 160/160mm

○ Weinmann Impulse 32h  
 - HBC Pro 32h 12/100mm  
 - HBC Pro 32h 12/142mm  
 ▮ Schwalbe Hurricane 622-40C  
 ▮ HEAD VL1782 CrN-Ti

▮ HBC 350/316mm

**CODE: 20324**



**The I-Speed line is something special for every road bike fan, but not only for them.**

The new season brings changes in the entire road bike collection: new designs, new shapes of the frames, better materials, disc brakes, and much more.

Five different specifications with carbon and alloy frames. Various of drivetrains from Shimano Tiagra to Shimano Ultegra Di2. Everyone will find a suitable road bike for himself.

# iSpeed V

**INTENDED USE**  
Race | Endurance | Fitness | Gravel

**SHORT INFO**  
frame: carbon aero monocoque  
fork: carbon dual champer  
drivetrain: 2x11 Ultegra Di2  
sizes: 57/59/61cm  
color: black matt/grey  
weight: 8.1 kg

28"



**CARBON** **TAPERED HEAD TUBE** **12x142mm** **12x100mm** **INTERNAL CABLE ROUTING** **DIRECT MOUNT** **PRESS FIT**

- Dual chamber carbon
- FSA Orbit C-40
- FSA SL-K SCR Compact 440/318
- FSA SL-K 90-110/318
- Shimano Ultegra STR8070 2x11 Di2
- Shimano Ultegra RDR8050 11 speed Di2
- Shimano Ultegra FDR8050 Di2
- Shimano Ultegra CSR8000 11-32T
- Shimano Ultegra FCR8000 50-34T 172.5mm
- Shimano Ultegra BRR8070 140/140 CL
- RRX Forty5 20/24h carbon
- HBC Pro 20h straight 12/100mm
- HBC Pro 24h straight 12/142mm
- Schwalbe One 700x23C
- HEAD VL1799 carbon
- HBC Carbon

**CODE: 20400**

# iSpeed IV

**INTENDED USE**  
Race | Endurance | Fitness | Gravel

**SHORT INFO**  
frame: carbon aero monocoque  
fork: carbon  
drivetrain: 2x11 ultegra  
sizes: 54/56/59 cm  
color: black matt/green  
weight: 7.7 kg

28"



**CARBON** **TAPERED HEAD TUBE** **12x142mm** **12x100mm** **INTERNAL CABLE ROUTING** **DIRECT MOUNT** **PRESS FIT**

- Full carbon
- FSA Orbit C-40
- FSA Gossamer Compact 440/318mm
- FSA Gossamer 90-110/318mm
- Shimano Ultegra STR8020 2x11
- Shimano Ultegra RDR8000 11 speed
- Shimano Ultegra FDR8000
- Shimano Ultegra CSR8000 11-32T
- Shimano Ultegra FCR8000 50-34T 172.5mm
- Shimano Ultegra BRR8070 140/140mm CL
- DT Swiss Spline P1800 24h
- DT Swiss Spline P1800 24h 12/100mm
- DT Swiss Spline P1800 24h 12/142mm
- Schwalbe One 700x23C
- HEAD VL1799 CrN-Ti
- HBC Carbon

**CODE: 20401**

# iSpeed III

**INTENDED USE**  
Race | Endurance | Fitness | Gravel

**SHORT INFO**  
frame: carbon aero monocoque  
fork: carbon  
drivetrain: 2x11 105  
sizes: 54/56/59cm  
color: black matt/yellow  
weight: 8.2 kg

28"



**CARBON** **TAPERED HEAD TUBE** **12x142mm** **12x100mm** **INTERNAL CABLE ROUTING** **DIRECT MOUNT** **PRESS FIT**

- Full carbon
- Neco H373M
- HBC Pro Road 44/318mm
- HBC Pro 80-110/318mm
- Shimano 105 STR7020 2x11
- Shimano 105 RDR7000 11 speed
- Shimano 105 FDR7000
- Shimano 105 CSR7000 11-32T
- FSA Gossamer Compact 50-34T 172.5mm
- Shimano 105 BRR7070 140/140mm CL
- DT Swiss Spline P1800 24h
- DT Swiss Spline P1800 24h 12/100mm
- DT Swiss Spline P1800 24h 12/142mm
- Schwalbe One 700x23C
- HEAD VL1799 CrN-Ti
- HBC Carbon

**CODE: 20402**

# iSpeed II

**INTENDED USE**  
Race | Endurance | Fitness | Gravel

**SHORT INFO**  
frame: carbon TPR  
fork: carbon  
drivetrain: 2x11 105  
sizes: 54/56/59cm  
color: black matt/silver  
weight: 8.6 kg

28"



**CARBON** **TAPERED HEAD TUBE** **INTERNAL CABLE ROUTING** **DIRECT MOUNT**

- Full Carbon
- Neco H373M
- HBC Pro Road 440/318mm
- HBC Pro 80-110/318mm
- Shimano 105 STR7000 2x11
- Shimano 105 RDR7000 11 speed
- Shimano 105 FDR7000
- Shimano 105 CSR7000 11-32T
- FSA Gossamer Compact 50-34T 172.5mm
- FSA Gossamer
- Remerx Rapid 32h
- Shimano HBRS400 32h QR9/100mm
- Shimano FHRS400 32h QR9/130mm
- Schwalbe One 700x23C
- HEAD VLI799 CrN-Ti
- HBC Carbon 400mm

CODE: 20403

# iSpeed I

**INTENDED USE**  
Race | Endurance | Fitness | Gravel

**SHORT INFO**  
frame: alloy 6061 TB TPR  
fork: carbon  
drivetrain: 2x9 Sora  
sizes: 52/56/59/61cm  
color: black matt/yellow  
weight: 9.7 kg

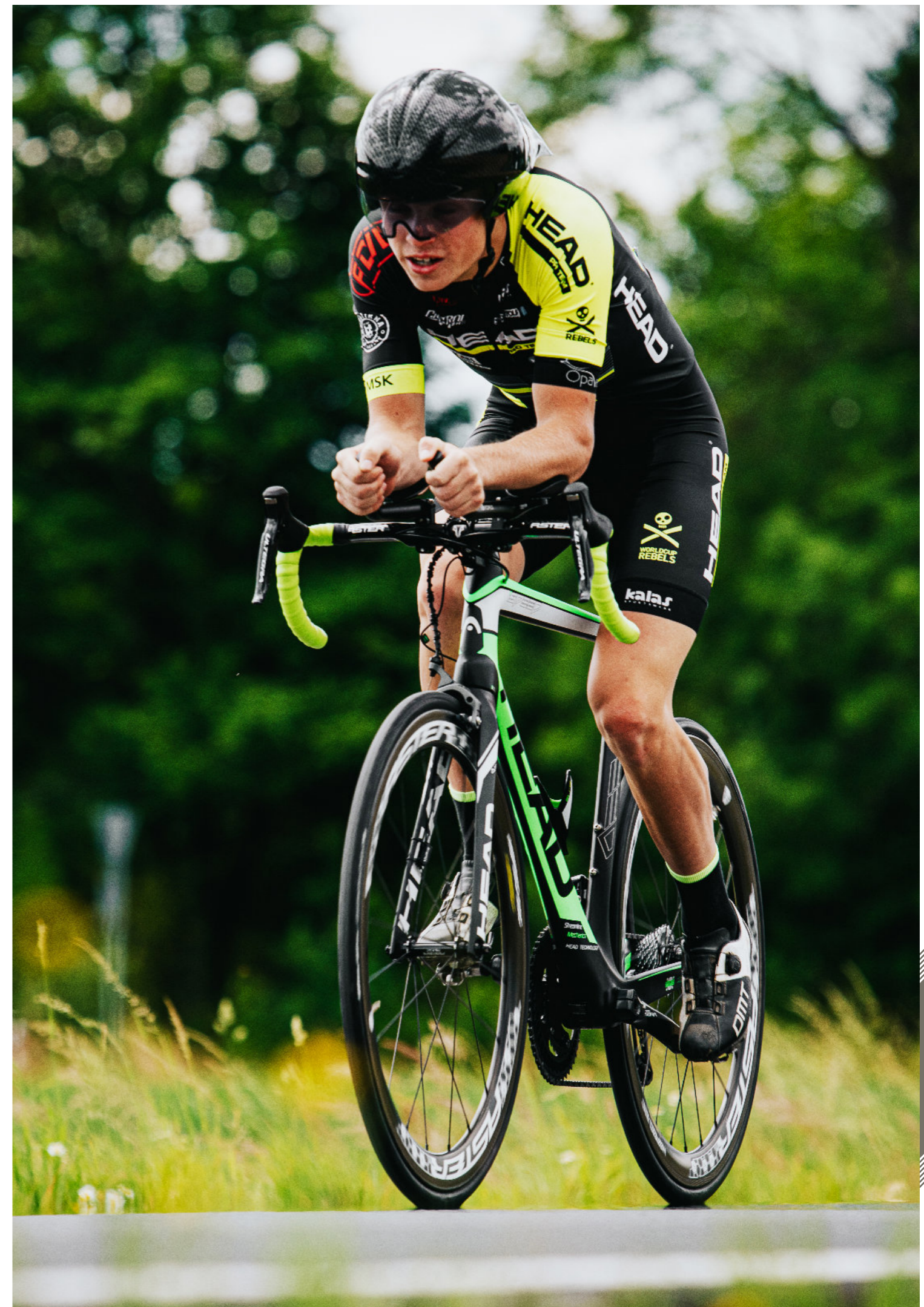
28"



**ALLOY 6061** **TAPERED HEAD TUBE** **TRIPPLE BUTTED** **INTERNAL CABLE ROUTING**

- Full Carbon
- Neco H373M
- HBC Pro Road 440/318mm
- HBC Pro 80-110/318mm
- Shimano Sora STR3000 2x9
- Shimano Sora RDR3000 9 speed
- Shimano Sora FDR3000
- Shimano HG400 11-32T
- FSA Vero Pro 50-34T 172.5mm
- Tektro R313
- Remerx Rapid 32h
- Shimano HBRS300 32h QR9/100mm
- Shimano FHRS300 32h QR9/130mm
- Schwalbe Lugano 700x23C
- HEAD VLI799 Cr-Mo
- HBC Pro 400/316mm

CODE: 20404



GRAVEL

When the asphalt road ends, you need a bike that will be able to take you to the forest path and back on tarmac. HEAD gravel bicycle line is the bike that will be able to meet this challenge. It is all about the adventures that you can make on your bike, and gravel bikes are waiting for them.

You can choose one of three specification variants with Shimano Tiagra 2x10 and Sram Apex 1x11 drivetrains. No matter the terrain, weather, or location, our gravel bikes are ready to give you as much fun as possible on your every adventure.

When the asphalt road ends the adventure on a gravel bike starts.

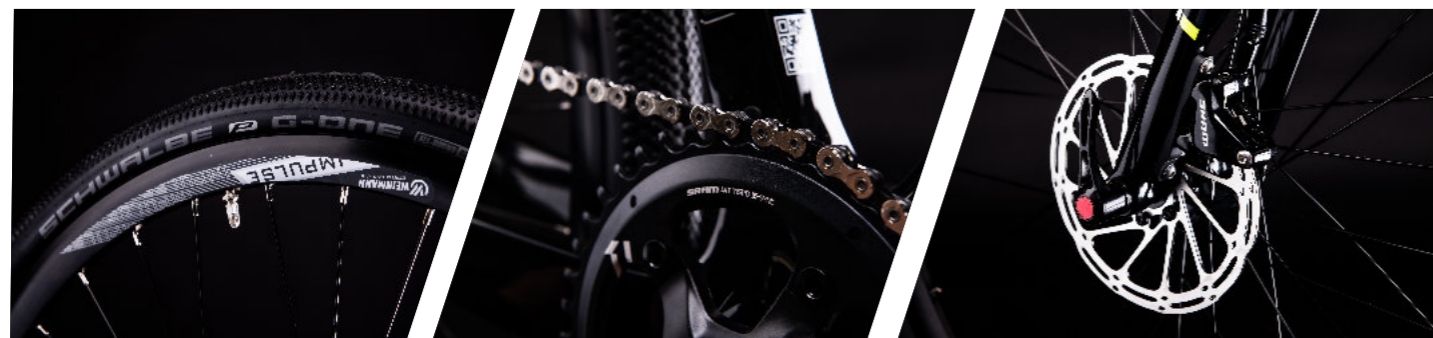


# I-Speed CrossPro

**INTENDED USE**  
Gravel | Race | Endurance | Fitness

**SHORT INFO**  
frame: carbon  
fork: carbon  
drivetrain: 1x11 Apex 1  
sizes: 54/56cm  
color: black/yellow  
weight: 13.9 kg

28"



**CARBON** **TAPERED HEAD TUBE** **INTERNAL CABLE ROUTING** **12x142mm** **15x100mm**

- Carbon - flat mount
- Neco H373M
- HBC Pro 440/318mm
- HBC Pro 100-110/318mm
- Sram Apex 1 1x11
- Sram Apex 1 11 speed
- Sram PG 1130 11-42T
- Sram Apex 1 44T 175mm
- Sram Apex 1 160/160mm
- Weinmann Impulse 24h
- HBC Pro 24h straight 15x100mm
- HBC Pro 24h straight 12x142mm
- Schwalbe G-One 622-40
- HEAD - VL1782
- HBC Pro 350/316mm

**CODE: 20500**

# Picton II

**INTENDED USE**  
Gravel | Race | Endurance | Fitness

**SHORT INFO**  
frame: alloy 6061 TPR DB HT  
fork: carbon  
drivetrain: 1x11 Apex 1  
sizes: 50/54/58/61cm  
color: green matt  
weight: 10.2 kg

28"



**ALLOY 6061** **DOUBLE BUTTED** **TAPERED HEAD TUBE** **INTERNAL CABLE ROUTING** **12x142mm** **15x100mm**

- Carbon
- Neco H373M
- HBC Pro 440/318mm
- HBC Pro 90-120/318mm
- Sram Apex 1 1x11
- Sram Apex 1 11 speed
- Sram PG 1130 11-42T
- FSA Omega MegaExo 42T 175mm
- Sram Apex 1 160/160mm
- Weinmann Impulse 32h
- HBC 32h 15x100mm
- HBC 32h 12x142mm
- Schwalbe G-One 622-40
- HEAD - VL1782
- HBC PRO 350/316mm

**CODE: 20501**

# Picton I

**INTENDED USE**  
Gravel | Race | Endurance | Fitness

**SHORT INFO**  
frame: alloy 6061 TPR DB HT  
fork: carbon  
drivetrain: 2x10 Tiagra  
sizes: 50/54/58/61cm  
color: orange matt  
weight: 10.5 kg

28"



**ALLOY 6061** **DOUBLE BUTTED** **TAPERED HEAD TUBE** **INTERNAL CABLE ROUTING**

- Carbon
- Neco H373M
- HBC 440/318mm
- HBC 90-120/318mm
- Shimano Tiagra ST4700 2x10
- Shimano Tiagra RD4700 10 speed
- Shimano Tiagra FD4700
- Shimano HG500 11-34T
- FSA Omega MegaExo 46-36T 175mm
- Tektro Mira MD-C400 160/160mm
- Weinmann Impulse 32h
- HBC 32h QR9/100mm
- HBC 32h QR9/135mm
- Schwalbe G-One 622-35
- HEAD - VL1782
- HBC 350/316mm

**CODE: 20502**

CROSS



The HEAD cross bike line consists of well known X-Rubi Cross and I-Peak models.

The new collection has brought new designs and upgraded frames. All frames are made of high quality 6061 alloy, with hydroformed tubes, which gives the bike a unique look. All cables are routed inside the frame tubes, so they look nice and clean.

Various specifications and durable components make HEAD cross bikes an excellent choice for town-to-forest journeys.

# X-Rubi cross

INTENDED USE  
TOURING | CROSS | URBAN

**SHORT INFO**  
frame: alloy 6061 TPR DB HT  
travel: 100mm  
drivetrain: 3x10 Deore/Deore  
sizes: 48/52/56cm  
color: black matt/red  
weight: 13.9 kg

28"



- ALLOY 6061
- DOUBLE BUTTED
- HYDROFORMED TUBE
- TAPERED HEAD TUBE
- INTERNAL CABLE ROUTING
- DIRECT MOUNT

- 
- 
- 
- 
- 
- 
- 
- 
- 
- 
- 
- 
- 
- 
- 
- 
- 

CODE: 20600

# i-Peak II

INTENDED USE  
TOURING | CROSS | URBAN

**SHORT INFO**  
frame: alloy 6061 HT  
travel: 63mm  
drivetrain: 3X9 Acera/Altus  
sizes: men - 50/55/59 cm  
women - 46/50/54cm  
color: men - black matt/green  
women - grey matt/lime  
weight: 13.7 kg

28"



- ALLOY 6061
- HYDROFORMED TUBE
- INTERNAL CABLE ROUTING

- 
- 
- 
- 
- 
- 
- 
- 
- 
- 
- 
- 
- 
- 
- 
- 
- 

CODE: MEN 20601  
WOMEN - 20602



CROSS

# i-Peak I

INTENDED USE  
TOURING | CROSS | URBAN

**SHORT INFO**  
frame: alloy 6061 HT  
travel: 63mm  
drivetrain: 3X8 TX800/TY710  
sizes: men - 50/55/59 cm  
women - 46/50/54cm  
color: men - black matt/blue  
women - grey matt/pink  
weight: 14.5 kg

28"



- ALLOY 6061
- HYDROFORMED TUBE
- INTERNAL CABLE ROUTING

- 
- 
- 
- 
- 
- 
- 
- 
- 
- 
- 
- 
- 
- 
- 
- 
- 

CODE: MEN 20603  
WOMEN - 20604

CROSS



The Revelo trekking bicycles are also known as long-distance bicycles - they are perfect for long, demanding trips and excursions. Thanks to the universal and comfortable construction, they can be successfully used for asphalt rides as well as for rides on unpaved paths and off-road tracks.

Because trekking bikes are designed for long-distance travels, all models have been equipped with functional accessories, such as dynamo and electric lamp, mudguards or carrier. The carriers on trekking bikes are adapted to the installation of special bicycle bags in which you can carry the equipment necessary for longer trips.



# Revelo II

**INTENDED USE**  
TOURING | CROSS | URBAN

**SHORT INFO**

frame: alloy 6061 HT  
travel: 63mm  
drivetrain: 3X9 Deore/Altus  
sizes: men - 50/55/59 cm  
women - 46/50/54cm  
color: black matt/green  
weight: 15.9 kg

28"



AL ALLOY 6061 HO HYDROFORMED TUBE IC INTERNAL CABLE ROUTING

- ☞ Suntour NEX HLO DS 63mm
- Neco H113
- ~ HBC Trekking 660/318mm
- HBC 90/100mm
- ☞ Shimano EF505 3x9

- ☞ Shimano Deore RDM591 9 speed
- ☞ Shimano Altus FDM370
- ☉ Shimano HG200 11-32T
- ☞ Suntour XCM T418 48-36-26 175mm
- ☉ Shimano EF505 160/160mm

- Remerx Dragon 719 32h
- ☞ Dynamo Shimano DH3 32h 100mm
- ☞ Formula DC22 32h QR9/135mm
- ☞ Schwalbe Citizen + RT 28x1.4"
- ☞ Axa Slim
- ☞ HEAD - VL4333/VL6309

- ☞ HBC 350/272mm
- ☞ Welgo C169T 2DU
- ☞ Axa Echo 15
- ☞ Axa Slim

CODE: MEN 20700  
WOMEN - 20701

# Revelo I

**INTENDED USE**  
TOURING | CROSS | URBAN

**SHORT INFO**

frame: alloy 6061 HT  
travel: 63mm  
drivetrain: 3X8 Altus/TY710  
sizes: men - 50/55/59 cm  
women - 46/50/54cm  
color: black matt/blue  
weight: 15.9 kg

28"



AL ALLOY 6061 HO HYDROFORMED TUBE IC INTERNAL CABLE ROUTING

- ☞ Suntour NEX HLO DS 63mm
- Neco H113
- ~ HBC Trekking 660/318mm
- HBC 90/100mm
- ☞ Shimano STEF500 3x8

- ☞ Shimano Altus RDM310 8 speed
- ☞ Shimano FDTY710
- ☉ Shimano HG31 11-32T
- ☞ Suntour XCE T318 48-38-28 175mm
- ☉ Tektro C310

- Remerx Dragon 719 36h
- ☞ Dynamo Shimano DH3000 36h 100mm
- ☞ Formula OV32 36h QR9/135mm
- ☞ Schwalbe Citizen + RT 28x1.4"
- ☞ HEAD - VL4333/VL6309

- ☞ HBC 350/272mm
- ☞ Welgo C157
- ☞ Axa Echo 15
- ☞ Axa Slim

CODE: MEN 20702  
WOMEN - 20703



Free movement around the city is one of the most pleasant moments you can afford by choosing city bikes as a possibility of transport. HEAD City line is adapted for comfortable asphalt driving among trees. While riding a bike, you can find the real charms of the city.

Comfortable and safe driving around the city streets brings a lot of relaxation and sports activity at the same time

Say goodbye to traffic jams on the streets and enjoy free movement around every corner of your city!



# City

INTENDED USE  
TOURING | CROSS | URBAN

## SHORT INFO

frame: alloy 6061 HT  
travel: 40mm  
drivetrain: Nexus 7G  
sizes: 28" - 46cm  
26" - 44cm  
color: black matt/orange  
grey matt/green  
weight: 28" - 15.9 kg  
26" - 15.8kg

26" 28"



AL ALLOY 6061

IC INTERNAL CABLE ROUTING

- ┆ Suntour CR7 40mm
- ┆ Neco H113
- ┆ HBC City 660/318mm
- ┆ HBC 90-100/318mm
- ┆ Shimano Nexus 7G

- ┆ Shimano Nexus 7G
- ┆ Steel 22T
- ┆ Prowheel Pro A38 170mm
- ┆ Tektro C310
- ┆ Remerx Dragon 719 36h

- ┆ Dynamo Shimano DH3000 36h 100mm
- ┆ Shimano SGC3001 36h 135mm
- ┆ Schwalbe Citizen + RT 28x16" 26x175"
- ┆ HEAD - VL6310
- ┆ HBC 350/27.2mm

- ┆ Wellgo C169T DU
- ┆ Axa Echo 15
- ┆ Axa Slim

CODE: 26" 20800  
28" - 20801



**HEAD Kid's bicycle line is a great first step for young riders looking forward to start mountain biking.**

All bikes have 6061 alloy frames, that helps us to make them light. Designs are colorful, and they are inspired by the X-Rubi and JOY lines. Even the youngest kids will find something special for themselves, the smallest bike in our offer is built on 16" wheels.

Your kid will never get bored with his HEAD bike.

# Ridott III 26

INTENDED USE  
KID'S BIKE

SHORT INFO  
frame: alloy 6061 HT  
travel: 100mm  
drivetrain: 3x8 TX800/TY700  
color: black matt/orange  
size: 36cm  
weight: 13.3 kg

26"



AL ALLOY 6061 ic INTERNAL CABLE ROUTING

- Zoom HL CH-565D AMS 100mm
- Neco HI42
- HBC MTB 560/25.4mm
- HBC 70/25.4mm
- Shimano EF505 3x8
- Shimano RD-TX800 8 speed
- Shimano FD-TY700
- Shimano HG31 11-32T
- Suntour XCC T102 42-34-24 170mm
- Shimano EF505 160/160mm
- Remerx Dragon 719 32h
- Formula DC20 32H QR9/100mm
- Formula DC22 32H QR9/135mm
- Kenda 26x195"
- WELLGO CI69T 2DU
- HEAD - VL7040
- HBC - 300/272mm

CODE: 20900

# Ridott I 26

INTENDED USE  
KID'S BIKE

SHORT INFO  
frame: alloy 6061 HT  
travel: 100mm  
drivetrain: 3x8 TX800/TY700  
color: orange matt  
size: 36cm  
weight: 13.3 kg

26"



AL ALLOY 6061 ic INTERNAL CABLE ROUTING

- Zoom HL CH-565 AMS 100mm
- Neco HI42
- HBC MTB 560/25.4mm
- HBC 70/25.4mm
- Shimano TX800 3x8
- Shimano RD-TX800 8 speed
- Shimano FD-TY700
- Shimano HG31 11-32T
- Suntour XCC T102 42-34-24 170mm
- Tektro C310
- Remerx Dragon 719 36h
- Formula OV31 36H QR9/100mm
- Formula OV32 36H QR9/135mm
- Kenda 26x195"
- WELLGO LU 895T DU
- HEAD - VL7040
- HBC - 300/272mm

CODE: 20902

# Ridott II 26

INTENDED USE  
KID'S BIKE

SHORT INFO  
frame: alloy 6061 HT  
travel: 100mm  
drivetrain: 3x8 TX800/TY700  
color: black matt/yellow  
size: 36cm  
weight: 13.6 kg

26"



AL ALLOY 6061 ic INTERNAL CABLE ROUTING

- Zoom HL CH-565D AMS 100mm
- Neco HI42
- HBC MTB 560/25.4mm
- HBC 70/25.4mm
- Shimano TX800 3x8
- Shimano RD-TX800 8 speed
- Shimano FD-TY700
- Shimano HG31 11-32T
- Suntour XCC T102 42-34-24 170mm
- Tektro MDM280 160/160mm
- Remerx Dragon 719 32h
- Formula DC20 32H QR9/100mm
- Formula DC22 32H QR9/135mm
- Kenda 26x195"
- Wellgo LU 895T DU
- HEAD - VL7040
- HBC - 300/272mm

CODE: 20901



# Ridott III 24

INTENDED USE  
KID'S BIKE

SHORT INFO  
frame: alloy 6061 HT  
travel: 50mm  
drivetrain: 3x8 TX800/TY700  
color: black matt/blue  
size: 34cm  
weight: 12.4 kg

24"



AL ALLOY 6061 ic INTERNAL CABLE ROUTING

Zoom HL CH-565D AMS 50mm  
Neco HI42  
HBC MTB 560/25.4mm  
HBC 70/25.4mm  
Shimano EF505 3x8

Shimano RD-TX800 8 speed  
Shimano FD-TY700  
Shimano HG31 11-32T  
Suntour XCE JR T312 42-34-24 152mm  
Shimano EF505 160/160mm

Remerx Dragon 719 32h  
Formula DC20 32H QR9/100mm  
Formula DC22 32H QR9/135mm  
Kenda 24x195"  
Wellgo LU 895T DU

HEAD - VL7040  
HBC - 300/272mm

CODE: 20903

# Ridott I 24

INTENDED USE  
KID'S BIKE

SHORT INFO  
frame: alloy 6061 HT  
travel: 50mm  
drivetrain: 3x7 TY300/TY300  
color: orange matt  
size: 34cm  
weight: 12.2 kg

24"



AL ALLOY 6061 ic INTERNAL CABLE ROUTING

Zoom HL CH-565 50mm  
Neco HI42  
HBC MTB 560/25.4mm  
HBC 70/25.4mm  
Shimano STEF41 3x7

Shimano RD-TY300 7 speed  
Shimano FD-TY300  
Shimano FTZ500 14-28T  
Suntour XCE JR T312 42-34-24 152mm  
Tektro C310

Remerx Dragon 719 36h  
Formula OV31 36H QR9/100mm  
Formula DC31 32H QR9/135mm  
Kenda 24x195"  
Wellgo LU 895T DU

HEAD - VL7040  
HBC - 300/272mm

CODE: 20905

# Ridott II 24

INTENDED USE  
KID'S BIKE

SHORT INFO  
frame: alloy 6061 HT  
travel: 50mm  
drivetrain: 3x7 TY300/TY300  
color: black matt/green  
size: 34cm  
weight: 12.9 kg

24"



AL ALLOY 6061 ic INTERNAL CABLE ROUTING

Zoom HL CH-565D 50mm  
Neco HI42  
HBC MTB 560/25.4mm  
HBC 70/25.4mm  
Shimano STEF41 3x7

Shimano RD-TY300 7 speed  
Shimano FD-TY300  
Shimano FTZ500 14-28T  
Suntour XCE JR T312 42-34-24 152mm  
Tektro MDM280 160/160mm

Remerx Dragon 719 32h  
Formula DC20 32H QR9/100mm  
Formula DC31 32H QR9/135mm  
Kenda 24x195"  
Wellgo LU 895T DU

HEAD - VL7040  
HBC - 300/272mm

CODE: 20904



Kids | 24"

Kids | 24"

# Lauren II 24

INTENDED USE  
KID'S BIKE

SHORT INFO  
frame: alloy 6061 HT  
travel: 50mm  
drivetrain: 3x7 TY300/TY300  
color: magenta matt  
size: 34cm  
weight: 12.9 kg

24"



AL ALLOY 6061 ic INTERNAL CABLE ROUTING

Zoom HL CH-565D 50mm  
Neco HI42  
HBC MTB 560/25.4mm  
HBC 70/25.4mm  
Shimano STEF41 3x7

Shimano RD-TY300 7 speed  
Shimano FD-TY300  
Shimano FTZ500 14-28T  
Suntour XCE JR T312 42-34-24 152m  
Tektro MDM280 160/160mm

Remerx Dragon 719 32h  
Formula DC20 32H QR9/100mm  
Formula DC31 32H QR9/135mm  
Kenda 24x195"  
Wellgo LU 895T DU

HEAD - VL7040  
HBC - 300/272mm  
CODE: 20906

# Lauren I 24

INTENDED USE  
KID'S BIKE

SHORT INFO  
frame: alloy 6061 HT  
drivetrain: 3x7 TY300/TY300  
color: lime matt || magenta matt  
size: 34cm  
weight: 11.6 kg

24"



AL ALLOY 6061 ic INTERNAL CABLE ROUTING

Rigid Hi-Ten  
Neco HI42  
HBC MTB 560/25.4mm  
HBC 70/25.4mm  
Shimano SLRS36 3x7

Shimano RD-TY300 7 speed  
Shimano FD-TY300  
Shimano FTZ500 14-28T  
Suntour XCE JR T312 42-34-24 152mm  
Tektro C310

Remerx Dragon 719 36h  
Formula OV31 36H QR9/100mm  
Formula OV31 36H QR9/135mm  
Kenda 24x195"  
Wellgo LU 895T DU

HEAD - VL7040  
HBC - 300/272mm  
CODE: 20907



# Ridott II 20

INTENDED USE  
KID'S BIKE

SHORT INFO  
frame: alloy 6061 HT  
travel: 40mm  
drivetrain: 1x7 TY300  
color: black matt  
size: 29cm  
weight: 9.9 kg

20"



AL ALLOY 6061 ic INTERNAL CABLE ROUTING

- Zoom HL CH-565 40mm
- Neco HI42
- HBC MTB 520/25.4mm
- HBC 60/25.4mm
- Shimano SLRS36 1x7

- Shimano RD-TY300 7 speed
- Shimano FTZ500 14-28T
- Prowhell PRO-W-36PP 127mm
- Tektro C310
- Remerx Dragon 719 36h

- Formula OV31 36H QR9/100mm
- Formula OV31 36H QR9/135mm
- Kenda 20x175"
- Wellgo LU 892T DU
- HEAD - VL5073

HBC 300/272mm

CODE: 20908

# Lauren 20

INTENDED USE  
KID'S BIKE

SHORT INFO  
frame: alloy 6061 HT  
drivetrain: 1x7 TY300/TY300  
color: magenta matt || mint matt  
size: 29cm  
weight: 9.9 kg

20"



AL ALLOY 6061 ic INTERNAL CABLE ROUTING

- Rigid Hi-Ten
- Neco HI42
- HBC MTB 520/25.4mm
- HBC 60/25.4mm
- Shimano SLRS36 1x7

- Shimano RD-TY300 7 speed
- Shimano FTZ500 14-28T
- Prowhell PRO-W-36PP 127mm
- Tektro C310
- Remerx Dragon 719 36h

- Formula OV31 36H QR9/100mm
- Formula OV31 36H QR9/135mm
- Kenda 20x175"
- Wellgo LU 892T DU
- HEAD - VL5073

HBC 300/272mm

CODE: 20910

# Ridott I 20

INTENDED USE  
KID'S BIKE

SHORT INFO  
frame: alloy 6061 HT  
drivetrain: 1x7 TY300  
color: yellow matt  
size: 29cm  
weight: 9.9 kg

20"



AL ALLOY 6061 ic INTERNAL CABLE ROUTING

- Rigid Hi-Ten
- Neco HI42
- HBC MTB 520/25.4mm
- HBC 60/25.4mm
- Shimano SLRS36 1x7

- Shimano RD-TY300 7 speed
- Shimano FTZ500 14-28T
- Prowhell PRO-W-36PP 127mm
- Tektro C310
- Remerx Dragon 719 36h

- Formula OV31 36H QR9/100mm
- Formula OV31 36H QR9/135mm
- Kenda 20x175"
- Wellgo LU 892T DU
- HEAD - VL5073

HBC 300/272mm

CODE: 20909

# Junior

INTENDED USE  
KID'S BIKE

SHORT INFO  
frame: alloy 6061 HT  
color: yellow matt || pink matt  
size: 24cm  
weight: 8.9 kg

16"



AL ALLOY 6061

- Rigid Hi-Ten
- Neco
- HBC MTB 500mm
- HBC 32mm

- Steel
- Well CT 28T
- Saccon + rear hub break
- Remerx 16"

- FH206
- KT305
- Rubena
- Marwi

HEAD  
HBC 200/272mm

CODE: 20911

ACCESSORIES



**Men Jersey Team**

Material: Spin - 100%, Polyester 125g/m<sup>2</sup>  
 Extras: Silicone stripe on arm ends, pockets, waterproof bag for valuables  
 Sizes: S, M, L, XL, XXL  
 Colors: black/neon yellow  
 ID: F100

**Men Cycle Shorts Team**

Material: 75% Polyamid, 25% Lycra Power, 225g/m<sup>2</sup>  
 Extras: net suspenders, silicone stripe on leg ends, ZOOM X padding  
 Sizes: S, M, L, XL, XXL  
 Colors: black/neon yellow  
 ID: F101

**Men Waistcoat**

Material: Microfiber - 100% Polyester 77g/m<sup>2</sup>  
 Extras: netting on rear part for better ventilation  
 Sizes: S, M, L, XL, XXL  
 Colors: black/neon yellow  
 ID: F102

**Men Anorak**

Material: Microfiber - 100% Polyester 77g/m<sup>2</sup>  
 Extras: lightweight  
 Sizes: S, M, L, XL, XXL  
 Colors: black/neon yellow  
 ID: F103

**Men Jersey Classic**

Material: 100% Polyester 140g/m<sup>2</sup>  
 Extras: pockets on rear, 1 pocket with zipper  
 Sizes: S, M, L, XL, XXL  
 Colors: black/orange, black/green  
 ID: F108

**Men Cycle Shorts Classic**

Material: 80% Polyamid, 20% Lycra, 190g/m<sup>2</sup>  
 Extras: with padding  
 Sizes: S, M, L, XL, XXL  
 Colors: black/orange, black/green  
 ID: F109

**Lady Jersey Team**

Material: Spin - 100%, Polyester 125g/m<sup>2</sup>  
 Extras: Silicone stripe on arm ends, pockets, waterproof bag for valuables  
 Sizes: XS, S, M, L, XL  
 Colors: black/pink  
 ID: F200

**Lady Cycle Shorts Team**

Material: 75% Polyamid, 25% Lycra Power, 225g/m<sup>2</sup>  
 Extras: silicone stripe on leg ends  
 Sizes: XS, S, M, L, XL  
 Colors: black/pink  
 ID: F201

**Lady Waistcoat**

Material: Microfiber - 100% Polyester 77g/m<sup>2</sup>  
 Extras: netting on rear part for better ventilation  
 Sizes: XS, S, M, L, XL  
 Colors: black/pink  
 ID: F202

**Lady Anorak**

Material: Microfiber - 100% Polyester 77g/m<sup>2</sup>  
 Extras: lightweight  
 Sizes: XS, S, M, L, XL  
 Colors: black/pink  
 ID: F203

**Lady Jersey Classic**

Material: 100% Polyester 140g/m<sup>2</sup>  
 Extras: pockets on rear, 1 pocket with zipper  
 Sizes: XS, S, M, L, XL  
 Colors: black/pink, black/mint, pink/peach  
 ID: F204

**Long Sleeve Jersey**

Material: 100% Polyester 200g/m<sup>2</sup>  
 Extras: pockets on rear part, waterproof bag for valuables  
 Sizes: S, M, L, XL, XXL  
 Colors: black/neon yellow  
 ID: F104

**Membrane Jacket 2 in 1**

Material: Membrane material (>10000mm, >10000mm g/m<sup>2</sup> 24h, + Lycra Power  
 Extras: removable sleeves with zipper  
 Sizes: S, M, L, XL, XXL  
 Colors: black/neon yellow  
 ID: F105

**Long Cycle Pants Warm**

Material: Membrane material (>10000mm, >10000mm g/m<sup>2</sup> 24h, + Roubaix - 85% Polyamid, 15% Elasthan, 250g/m<sup>2</sup>  
 Extras: without cycle pad, flat seams, short reflective zipper  
 Sizes: S, M, L, XL, XXL  
 Colors: black/neon yellow  
 ID: F106

**Lady Cycle Shorts Classic**

Material: 80% Polyamid, 20% Lycra, 190g/m<sup>2</sup>  
 Extras: with padding  
 Sizes: XS, S, M, L, XL  
 Colors: black/pink, black/mint, peach/pink  
 ID: F205





**Helmet MTB - W11**  
 Extras: In-Mould  
 Sizes: S/M - (54-58 cm) 245g  
 M/L - (57-61 cm) 265g  
 L/XL - (59-63 cm) 275g  
 Colors: black matt/green  
 black/yellow  
 black/pink  
 grey/mint  
 F300



Kevlar skeleton

**Helmet MTB - W19**  
 Extras: In-Mould  
 Sizes: S/M - (54-58 cm) 240g  
 M/L - (57-61 cm) 250g  
 Colors: black matt/green  
 black matt/white  
 white matt/pink  
 F302



**Helmet MTB - W07**  
 Extras: In-Mould  
 Sizes: S/M - (54-58 cm) 245g  
 M/L - (57-61 cm) 260g  
 L/XL - (59-63 cm) 265g  
 Colors: yellow matt  
 black matt  
 pink matt  
 F303



**Helmet MTB - W21**  
 Extras: In-Mould  
 Sizes: M/L - (57-61 cm) 250g  
 Colors: black matt/yellow  
 black matt/grey  
 F301



**Helmet Road - EC01**  
 Extras: In-Mould  
 Sizes: S/M - (55-59 cm) 250g  
 M/L - (57-61 cm) 265g  
 Colors: black matt/blue  
 black matt/green  
 F305



**Helmet Enduro CT03**  
 Extras: In-Mould  
 Sizes: S/M - (55-59 cm) 365g  
 M/L - (57-61 cm) 405g  
 Colors: grey matt/yellow  
 F304



**Helmet KID - Y11**  
 Extras: In-Mould, light in adjustment system  
 Sizes: S/M - (52-56 cm) 265g  
 Colors: blue matt  
 lime matt  
 F306



**Helmet KID - Y11**  
 Extras: In-Mould, light in adjustment system  
 Sizes: XS/S - (47-52 cm) 250g  
 Colors: green  
 mint  
 F307



**Helmet KID - Y11A**  
 Extras: Out Mould  
 Sizes: S/M - (52-56 cm) 230g  
 Colors: green matt  
 pink matt  
 F308

**Helmet KID - Y11**  
 Extras: Out Mould  
 Sizes: XS/S - (47-52 cm) 215g  
 Colors: blue  
 pink  
 F309



**T-Shirt Men**  
 Material: 100% Cotton  
 Sizes: S/M/L/XL  
 Color: black  
 ID: F500



**T-Shirt Lady**  
 Material: 100% Cotton  
 Sizes: S/M/L  
 Color: black  
 ID: F501



**Socks**  
 Material: 65% Climawell Polypropylen, 30%Polyamide, 3% Polypropylen, 2%elasten  
 Sizes: 37-39, 40-42, 43-45  
 Color: black/yellow  
 black/pink  
 ID: E700

**Socks Long**  
 Material: 65% Climawell Polypropylen, 30%Polyamide, 3% Polypropylen, 2%elasten  
 Sizes: 37-39, 40-42, 43-45  
 Color: black/yellow  
 black/pink  
 ID: E701



**Glove Men 9904**

Material: comfortable padding, towel on thumb, silicone for better grip control  
 Sizes: S, M, L, XL, XXL  
 Color: black  
 ID: F600



**Glove Men 7101**

Material: comfortable gel padding with foam, D-Grip, air comfort system, towel on thumb, pull-off system on fingers  
 Sizes: S, M, L, XL, XXL  
 Color: blue/orange  
 ID: F601



**Glove Men 7045**

Material: comfortable gel padding, silicon for better grip control, towel on thumb, pull-off system on fingers  
 Sizes: S, M, L, XL, XXL  
 Color: black/green  
 ID: F602



**Glove Kid 7045**

Material: soft foam padding, towel on thumbs  
 Sizes: S, M, L, XL  
 Color: black/blue  
 black/green  
 black/pink  
 ID: F613



**Glove Men 7011**

Material: superlight glove, micro ventilation, gel padding, towel on thumb, pull-off system on fingers  
 Sizes: S, M, L, XL, XXL  
 Color: black/yellow  
 ID: F603



**Glove Men 2804**

Material: gel padding, towel on thumb, pull-off system on fingers  
 Sizes: S, M, L, XL, XXL  
 Color: black/white  
 ID: F604



**Glove ROAD 7129**

Material: comfortable gel padding, road glove with D-Grip, very airy material, wrist protection  
 Sizes: S, M, L, XL, XXL  
 Color: black/yellow  
 ID: F605



**Glove Kid 8820**

Material: printed Lycra, foam padding  
 Sizes: S, M, L, XL  
 Color: black/pink  
 blue/green  
 ID: F614



**Glove Lady 8506**

Material: comfortable gel padding, well ventilated, towel on thumb, pull-off system on fingers  
 Sizes: S, M, L, XL  
 Color: black/pink  
 black/white  
 ID: F611



**Glove Lady 8516**

Material: gel padding, towel on thumb, pull-off system on fingers  
 Sizes: S, M, L, XL  
 Color: grey/pink  
 ID: F612



**Bottle 500ml**

Material: PVC, ergonomic design, screw-on cap, lockable spout  
 Sizes: 500 ml  
 Color: yellow  
 transparent  
 pink  
 ID: F400



**Bottle 750ml**

Material: PVC, ergonomic design, screw-on cap, lockable spout  
 Sizes: 750 ml  
 Color: yellow  
 transparent  
 ID: F401



**Glove Long Finger 9515**

Material: comfortable gel padding, well ventilated, towel on thumb, silicone on finger ends, TOUCH  
 Sizes: S, M, L, XL, XXL  
 Color: black  
 ID: F606



**Glove Long Finger 9600**

Material: lightweight, very well ventilated, silicone on finger for better grip on the handlebar  
 Sizes: S, M, L, XL, XXL  
 Color: black/yellow  
 ID: F607



**Glove Long Finger Lady 4713**

Material: very well ventilated, comfortable gel padding, towel on thumb, 3D foam, anti-slip system, smart touch  
 Sizes: S, M, L, XL  
 Color: black/pink  
 ID: F608



**Glove Long Finger 3004**

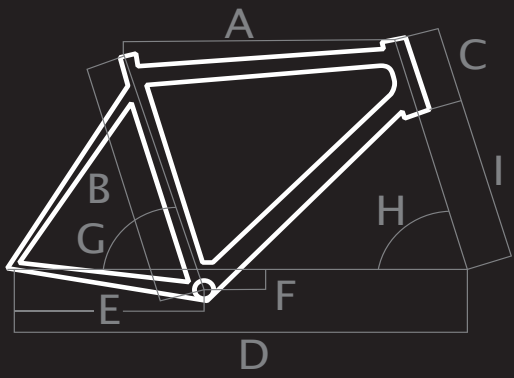
Material: comfortable warmer glove, silicone for better grip control, smart touch  
 Sizes: S, M, L, XL, XXL (only black/yellow)  
 Color: black/pink  
 ID: F609



**Glove Long Warm 1516**

Material: membrane glove with gel padding  
 Sizes: S, M, L, XL, XXL  
 Color: black/yellow  
 ID: F610





MURET table with columns for Size (41, 46, 51) and rows for dimensions A through I.

GRANGER/GRANGER LADY table with columns for Size (42, 47, 52, 56) and rows for dimensions A through I.

TROY I/II 27.5" table with columns for Size (41, 46, 51) and rows for dimensions A through I.

DURANGO table with columns for Size (44, 47, 51) and rows for dimensions A through I.

LAGOS table with columns for Size (43, 48, 53) and rows for dimensions A through I.

TRENTON LADY table with columns for Size (43, 48, 53) and rows for dimensions A through I.

X-RUBI LADY 29" table with columns for Size (44, 48, 52) and rows for dimensions A through I.

X-RUBI LADY 27.5" table with columns for Size (41, 46, 51) and rows for dimensions A through I.

TERNI E7000 table with columns for Size (44, 47, 51) and rows for dimensions A through I.

TERNI LADY E7000 table with columns for Size (44, 47, 51) and rows for dimensions A through I.

GRANBY E7000/GRANBY LADY table with columns for Size (46, 51, 55) and rows for dimensions A through I.

DAVIS E7000 table with columns for Size (46, 50) and rows for dimensions A through I.

TACOMA II 27.5" table with columns for Size (39, 44, 48) and rows for dimensions A through I.

TACOMA I 27.5" table with columns for Size (39, 44, 48) and rows for dimensions A through I.

I SPEED CROSSPRO table with columns for Size (54, 56) and rows for dimensions A through I.

I-PEAK WOMEN E6100/e-REVELO WOMEN E6100 table with columns for Size (46, 50, 54) and rows for dimensions A through I.

I-PEAK MEN E6100/e-REVELO MEN E6100 table with columns for Size (50, 55, 59) and rows for dimensions A through I.

CITY 26"/e-CITY 28" table with columns for Size (26", 28") and rows for dimensions A through I.

GRANBY BAFANG table with columns for Size (46, 51, 55) and rows for dimensions A through I.

PICTON I/II table with columns for Size (50, 54, 58, 61) and rows for dimensions A through I.

I-SPEED I table with columns for Size (52, 56, 59, 61) and rows for dimensions A through I.

I-SPEED II table with columns for Size (54, 56, 59) and rows for dimensions A through I.

TRIVOR MEN table with columns for Size (50, 55, 59) and rows for dimensions A through I.

TRIVOR WOMEN table with columns for Size (46, 50, 54) and rows for dimensions A through I.

I-PEAK MEN/e-REVELO MEN BAFANG table with columns for Size (50, 55, 59) and rows for dimensions A through I.

I-PEAK WOMEN/e-REVELO WOMEN BAFANG table with columns for Size (46, 50, 54) and rows for dimensions A through I.

I-SPEED III/IV table with columns for Size (54, 56, 59) and rows for dimensions A through I.

I-SPEED V table with columns for Size (57, 59, 61) and rows for dimensions A through I.

I-PEAK MEN/REVELO MEN table with columns for Size (50, 55, 59) and rows for dimensions A through I.

I-SPEED II table with columns for Size (55, 58, 61) and rows for dimensions A through I.

I-SPEED I table with columns for Size (55, 58, 61) and rows for dimensions A through I.

PICTON II table with columns for Size (55, 58, 61) and rows for dimensions A through I.

PICTON I table with columns for Size (55, 58, 61) and rows for dimensions A through I.

I-PEAK WOMEN/REVELO WOMEN table with columns for Size (46, 50, 54) and rows for dimensions A through I.

X-RUBI CROSS table with columns for Size (48, 52, 56) and rows for dimensions A through I.

CITY 26" table with columns for Size (44) and rows for dimensions A through I.

CITY 28" table with columns for Size (46) and rows for dimensions A through I.

ADAPT EDGE III/II/LADY table with columns for Size (44, 48, 52) and rows for dimensions A through I.

ADAPT EDGE I table with columns for Size (45, 48, 52) and rows for dimensions A through I.

RIDOTT I/II/III 26" table with columns for Size (36) and rows for dimensions A through I.

RIDOTT I/II/III 24" table with columns for Size (34) and rows for dimensions A through I.

LAUREN I/II 24" table with columns for Size (34) and rows for dimensions A through I.

TRENTON I/II/III/IV table with columns for Size (43, 48, 53) and rows for dimensions A through I.

X-RUBI III/IV/IV 29" table with columns for Size (44, 48, 52, 56) and rows for dimensions A through I.

X-RUBI I/II 29" table with columns for Size (44, 48, 52, 56) and rows for dimensions A through I.

RIDOTT I/II 20" table with columns for Size (29) and rows for dimensions A through I.

LAUREN 20" table with columns for Size (29) and rows for dimensions A through I.

JUNIOR 16" table with columns for Size (BOY, GIRL) and rows for dimensions A through I.



Project

# MARKETING NOVUS BIKE

**is co-founded by the European Union.**

The project focuses on the presentation of NOVUS BIKE s.r.o. on foreign markets, including the printing of foreign language promotion materials.

Completion of implementation: 31.12.2020

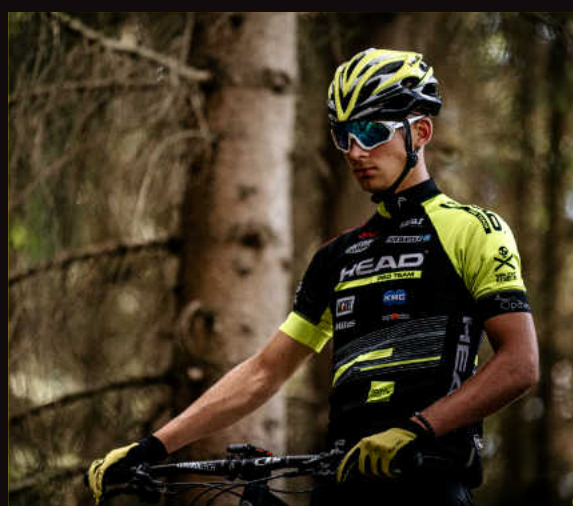


EUROPEAN UNION

European Union Regional Development Fund  
Operational programme Enterprise and  
Innovations for Competitiveness.



MINISTERSTVO  
PRŮMYSLU A OBCHODU



WWW.HEAD-BIKE.COM


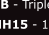
WWW.FACEBOOK.COM/HEADBIKE

WWW.INSTAGRAM.COM/HEADBIKES\_FACTORY

PICTURES:  
ADAM GŁOSOWICZ

PRINTED BY  
WWW.GRAFICO.CZ

Dictionary / Lexikon / Slovník

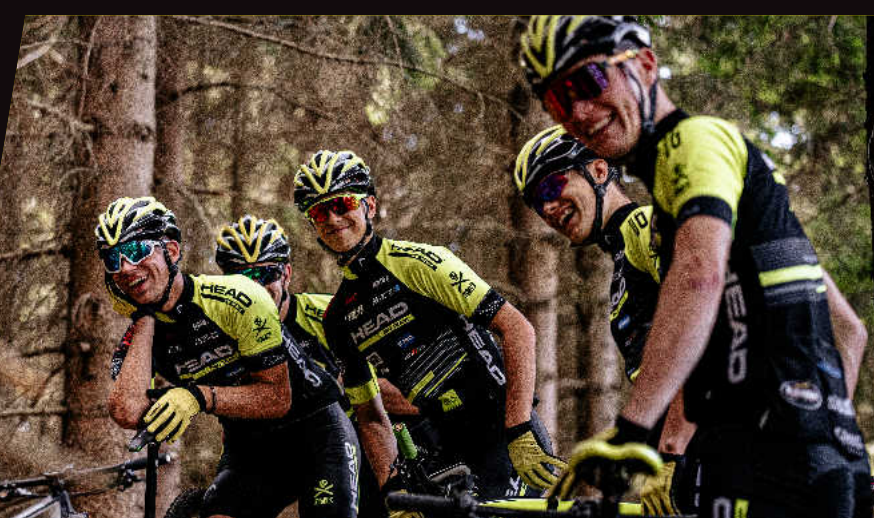
	>> Front fork	Gabel	Vidlice		>> Brakes	Bremsen	Brzdy		>> Rims	Felgen	Ráfky
	>> Rear shock	Dämpfer	Zadní tlumič		>> Front hub	Nabe vorne	Přední náboj		>> Saddle	Sattel	Sedlo
	>> Head set	Steuersatz	Hlavové složení		>> Rear hub	Nabe hinten	Zadní náboj		>> Pedals	Pedale	Pedály
	>> Shift levers	Schalthebel	Řazení		>> Battery	Batterie	Baterie		>> Headlight	Scheinwerfer	Přední světlo
	>> Rear derailleur	Schaltwerk	Přehazovačka		>> Display	Bildschirm	Zobrazení		>> Rearlight	Rücklicht	Zadní světlo
	>> Front derailleur	Umwerfer	Přesmyk		>> Motor	Motor	Motor		>> Stem	Vorbau	Představec
	>> Crank set	Kurbel	Převodník		>> Weight	Gewicht	Váha		>> Handlebar	Lenker	Řídítka
	>> Cassette	Kassette	Kazeta		>> Tires	Reifen	Pláště		>> Seatpost	Sattelstütze	Sedlovka

Shortcuts / Abkürzungen / Zkratky

TB - Triple Butted / Triple Butted / Triple Butted  
 HH15 - 15mm Thru Axle / Steckachse 15mm / Protahovací osa 15mm  
 HLO - Hydraulic Lock Out / Hydraulischer Lock Out / Hydraulické zamykání

Boost - 15x110mm front and/or 12x148mm rear hub / 15x110mm vordere und/oder 12x148mm hintere Nabe / 15x110mm přední a/nebo 12x148mm zadní náboj  
 TPR - Tapered steerer fork (1 1/8"-1.5") / Tapered Gabel / Tapered vidlice

SA - Solo Air / Solo Air / Solo Air  
 RL - Remote Lock / Remote Lock / Dálkové zamykání



**PRODUCER AND MAIN DISTRIBUTOR  
FOR  
AUSTRIA, CZECH REPUBLIC, FRANCE  
GERMANY, AND SLOVAKIA**

**Novus Bike s.r.o.**

Vančurova 2985/20  
746 01 Opava  
Tel. No.: +420 606 178 065  
info@head-bike.com

**BULGARIA  
VELOZONA**

Burgas  
Tel. No.: +0359 887 800 104  
www.velozona-bg.com  
velozona@mail.bg  
velozona@abv.bg

**ICELAND  
Útivera ehf**

Skeifunni 6  
108 Reykjavík  
www.everest.is  
everest@everest.is

**ROMANIA**

**Nevesport SRL.**  
STR. Lunca Mare 18, ap 5  
Miercurea Ciuc  
Tel. No.: +40 740 676 586  
nevesportsrl@gmail.com

**SWEDEN, DENMARK, NORWAY**

**HEAD BIKE SVERIGE**  
Lillebovägen 10  
352 62 VAXJO  
Tel. No.: +46 73 845 00 58  
www.headbike.se  
dan@headbike.se

**FINLAND  
PowerFactory**

Kaskimäenkatu 7, 33900 Tampere  
Tel. No.: +358-20-122 2555  
asiakaspalvelu@uimonen.fi  
www.powerfactory.fi

**ITALY  
HEAD BIKE ITALY**

39100 Bolzano  
Tel. No.: +39 366 4072215  
info@head-bike.it  
www.head-bike.it

**SLOVENIA, CROATIA,  
BOSNIA AND HERZEGOVINA,  
SERBIA, MONTENEGRO**

**INTERSPORT ISI d.o.o.**  
Cesta na Okroglo 3  
4202 Naklo  
Slovenija  
Tel. +386 4 256 84 29  
informacie@intersport.si

**SWITZERLAND, LIECHTENSTEIN  
Kasper Trading GmbH**

Kantonsstrasse 13  
6033 Buchrain  
Schweiz  
Tel: +41 79 193 01 05  
Email: trading.kasper@gmail.com

**GREECE  
ACTION-BIKES**

48 Pentelis Avenue  
15234 Halandri - Athens  
Tel. No.: 2106846632  
www.action-bikes.gr  
info@action-bikes.gr

**POLAND  
PRO SPORT**

Kwiatowa 40  
45-569 Opole  
Tel. No.: +48 (0) 77 453 7008  
www.head-bikes.pl  
info@head-pikes.pl

**SPAIN, PORTUGAL, ANDORRA**

**Jets Marivent**  
Cerro de la Buttera 3  
28223, Pozuelo de Alarcon,  
Madrid, España  
Tel. No.: +34 91 357 92 92  
www.jetsmarivent.com  
info@jetsmarivent.com  
www.head-bike.es  
www.head-bike.pt

**UKRAINE  
STAR GROUP**

Kiev  
Kazimir Malevich st., 86P  
Tel. No.: +38 063 263 66 66  
www.head-bike.com.ua  
headbike.ua@gmail.com

**HUNGARY**

**Wintersport Co. Ltd.**  
Csillaghegyi út 36.  
H-1037 Budapest  
Tel. No.: +36 30 9481404  
or +36 70 376 0640  
www.headbike.hu  
wintersport@wintersport.hu

**REPUBLIC OF SOUTH AFRICA**

**HEAD Bikes SA (Pty) Ltd**  
2 Regency Drive, Route 21  
Corporate Park Irene, Pretoria, 0157  
Gauteng  
Tel. No.: +27 60 989 2871  
www.head-bike.co.za  
info@head-bike.co.za



NOVUS BIKE s.r.o. is an official licensee of HEAD UK Group.

**HEAD**

Barevné odchylky a technické změny vyhrazeny.  
Neonové barvy mohou v průběhu času změnit svůj odstín. Neručíme za tiskové chyby.  
Farbabweichungen und Technische Änderungen vorbehalten.  
Neonfarben können im Laufe der Zeit ihre Tönung ändern. Keine Gewähr für Druckfehler.  
Color deviations and technical changes reserved.  
Neon colors may change shade during time. No guarantee for printing errors.